

CENTRAL BUSINESS DISTRICT STREET TREE INVENTORY & PLAN DOVER, NH

CAW Summit Presentation
September 28 & 29, 2022

Liz Durfee, AICP, EF | Design & Planning, LLC



EF | Design &
Planning, LLC



New Hampshire
Coastal Program
DEPARTMENT OF
ENVIRONMENTAL SERVICES



NEW HAMPSHIRE
DEPARTMENT OF
Environmental
Services





BENEFITS

- **Stormwater management**
- **Temperature regulation**
- **Habitat**
- **Air purification**
- **Beautification**
- **Property value**

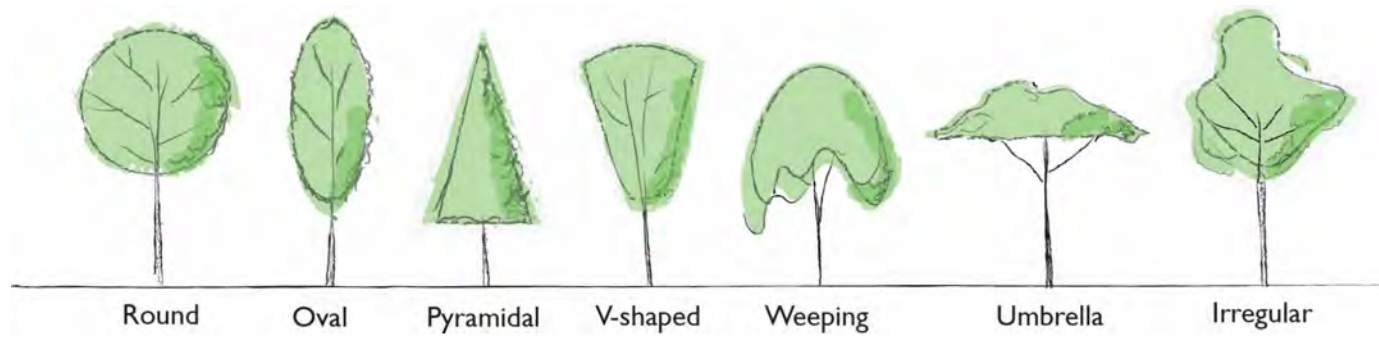
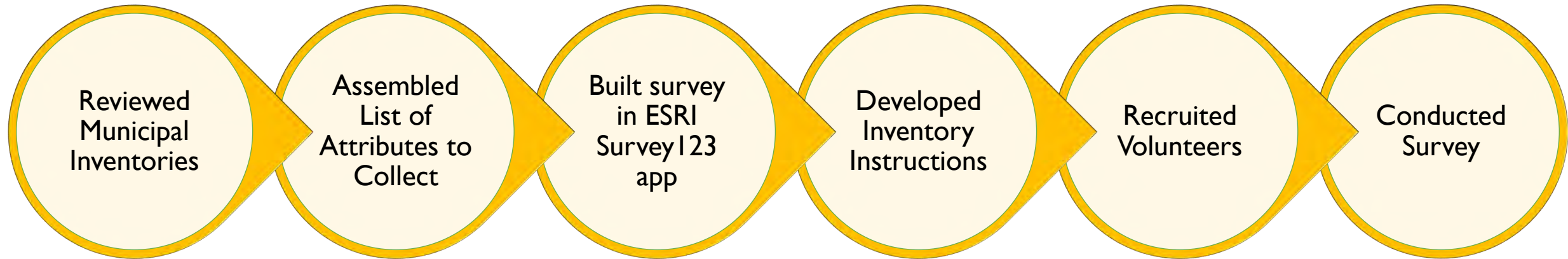
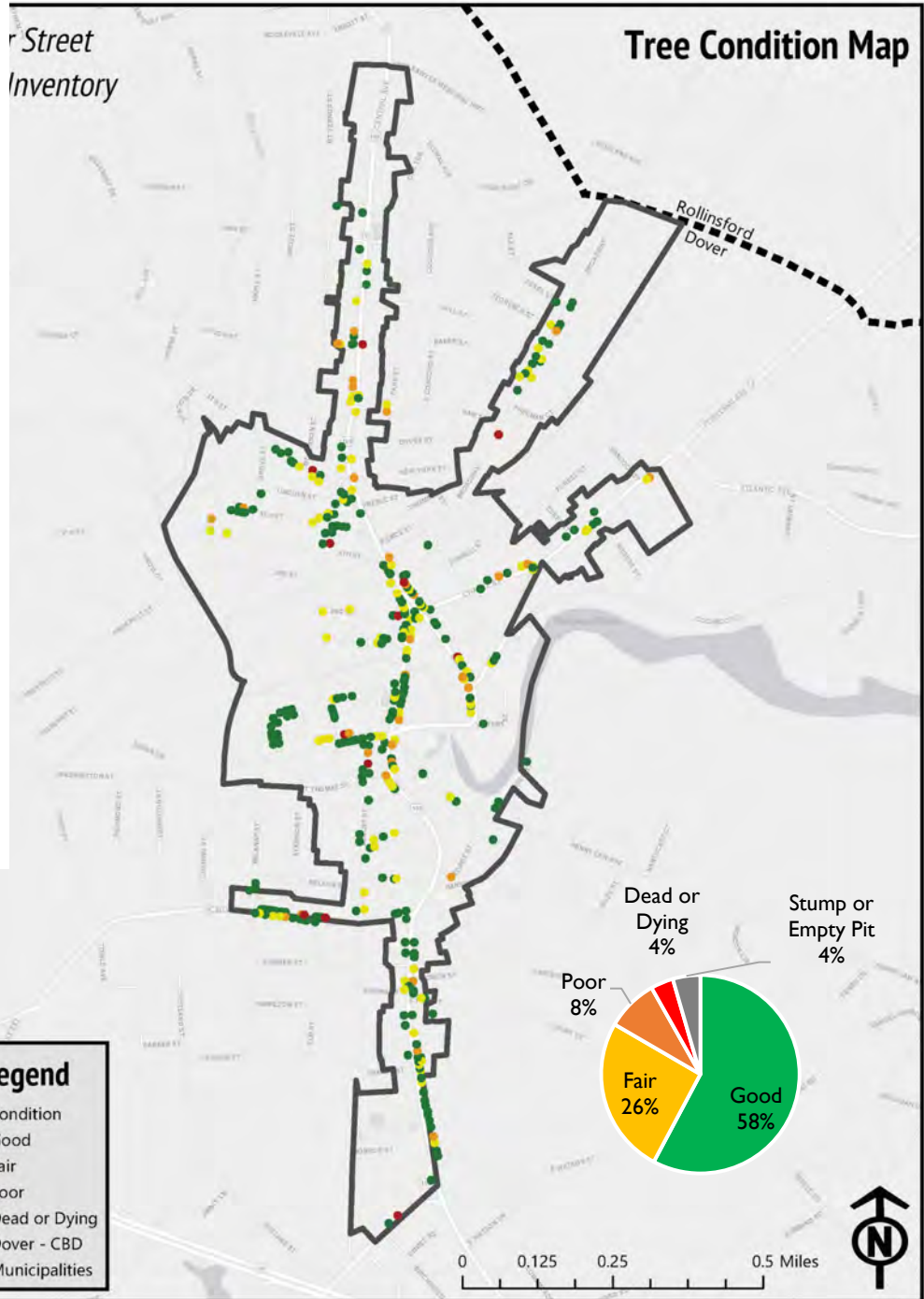


Figure 6. Tree crown shapes

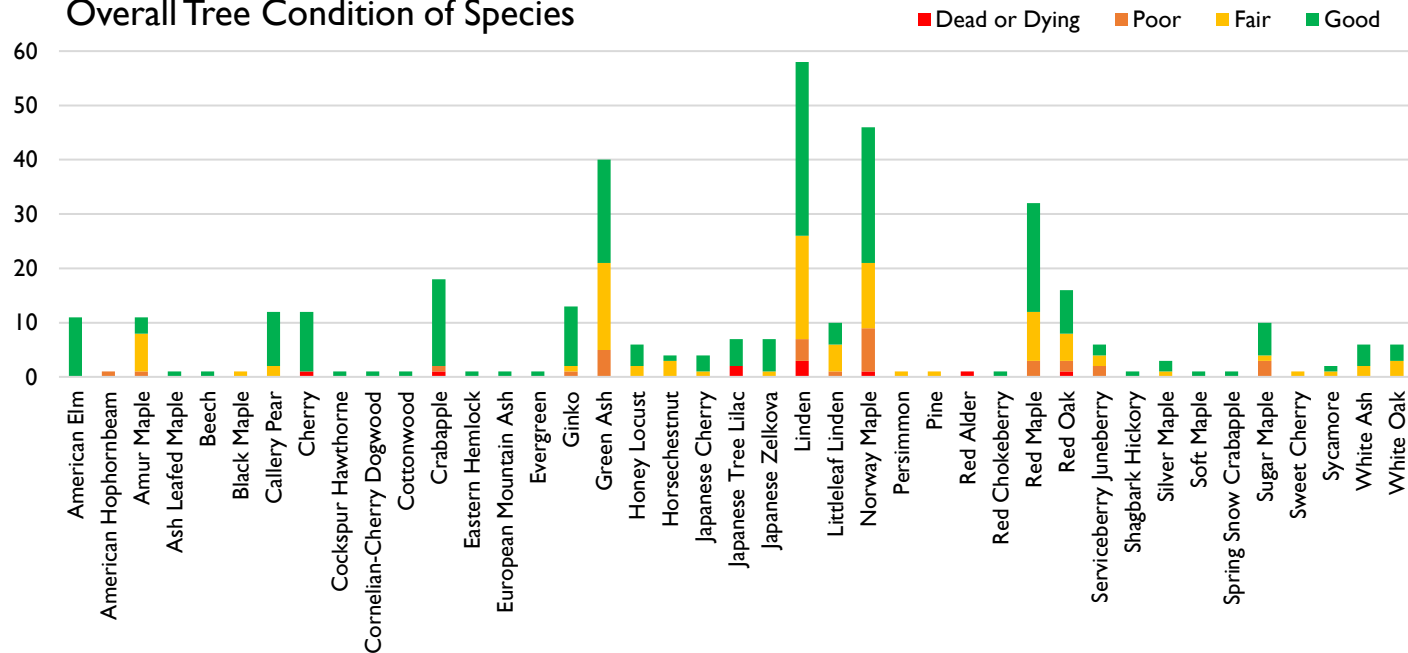


STREET TREE INVENTORY PROCESS

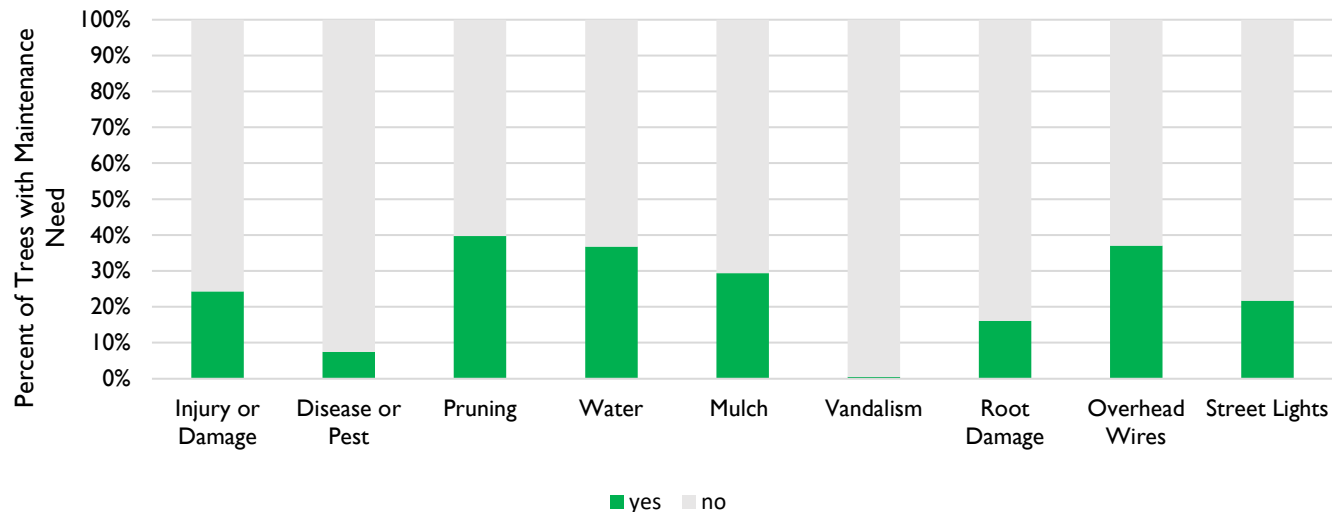
INVENTORY RESULTS



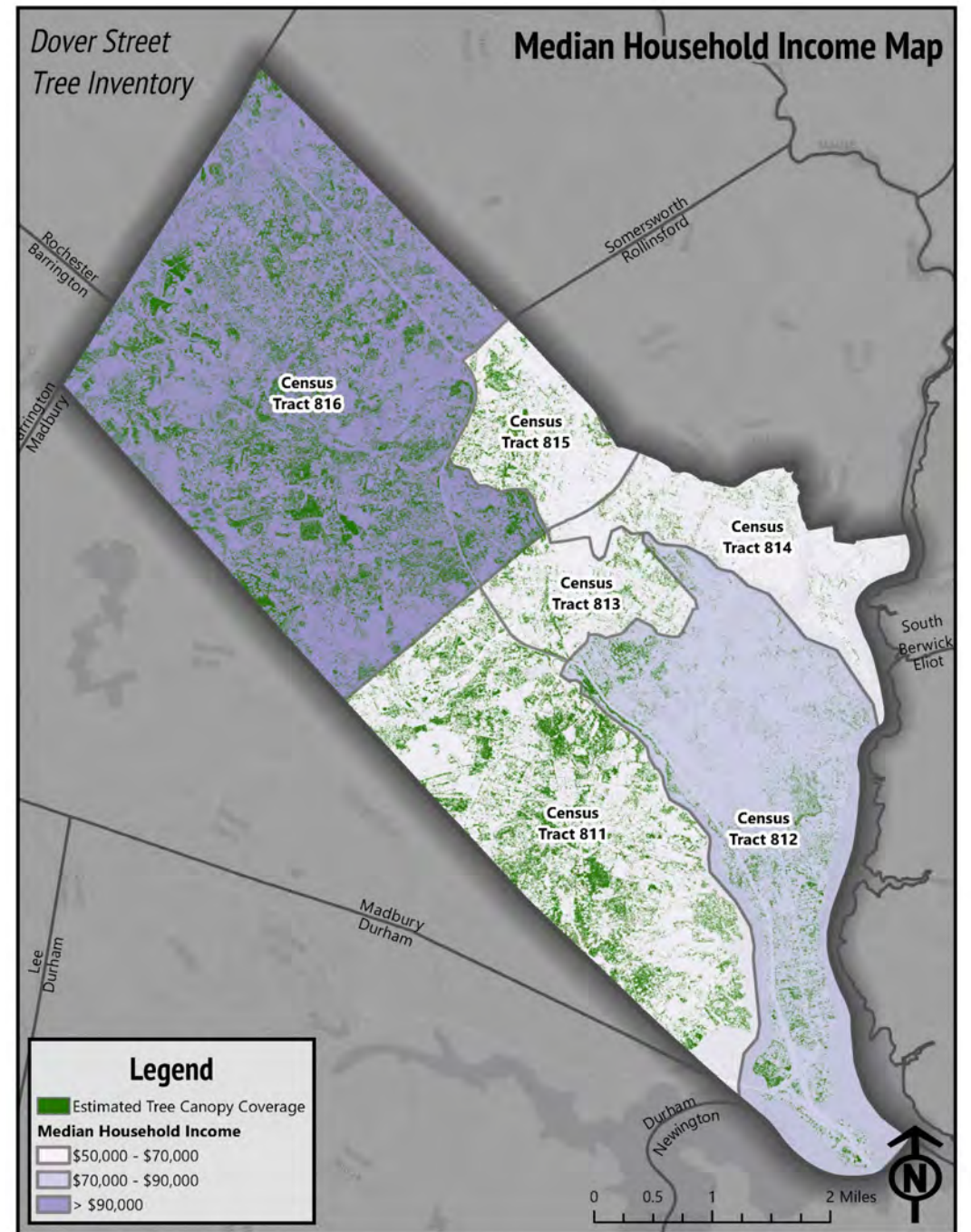
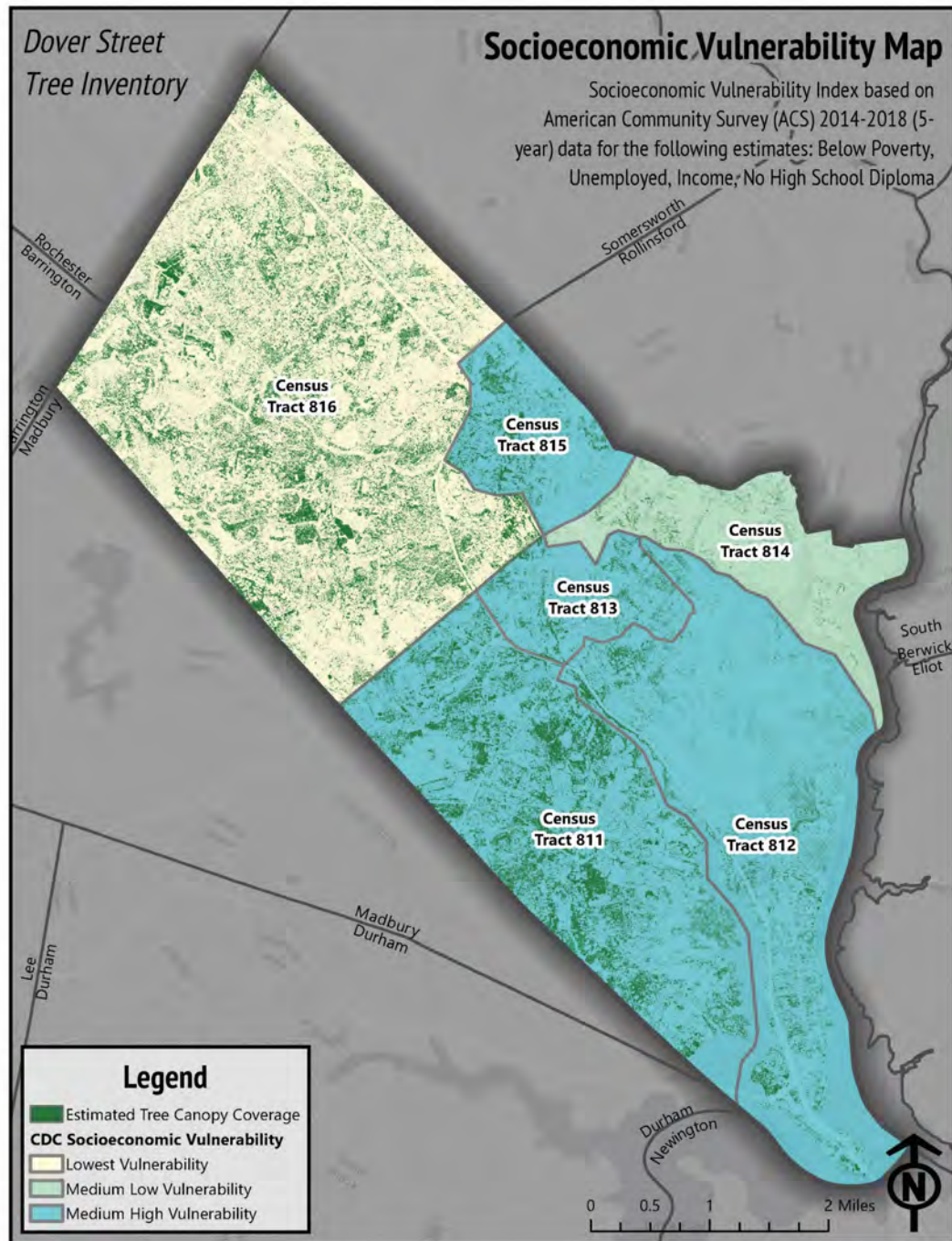
Overall Tree Condition of Species



Maintenance Needs



SOCIO-ECONOMIC ANALYSIS



TAKE AWAYS

- Survey123 was a good tool for a street tree inventory with volunteers
- GIS database, implementation plan, and management recommendations will help the City track, maintain, and replace street trees
- Coordinating closely with staff was essential. It would have been beneficial to have Facilities and Grounds staff involved
- A street tree inventory could be a standalone project, leaving more time for training and conducting the survey
- There were inherent limitations with the socio-economic canopy cover analysis (scale of Census data, canopy data)
- The inventory can be replicated in other areas of the city



NEXT

- Incorporate information in on tree selection to maximize benefits like stormwater management and air quality into City policies and regulations
- Refine the inventory process and training material and conduct inventories in other areas of Dover and other communities
- Look into alternative methods to measure canopy cover



QUESTIONS?

