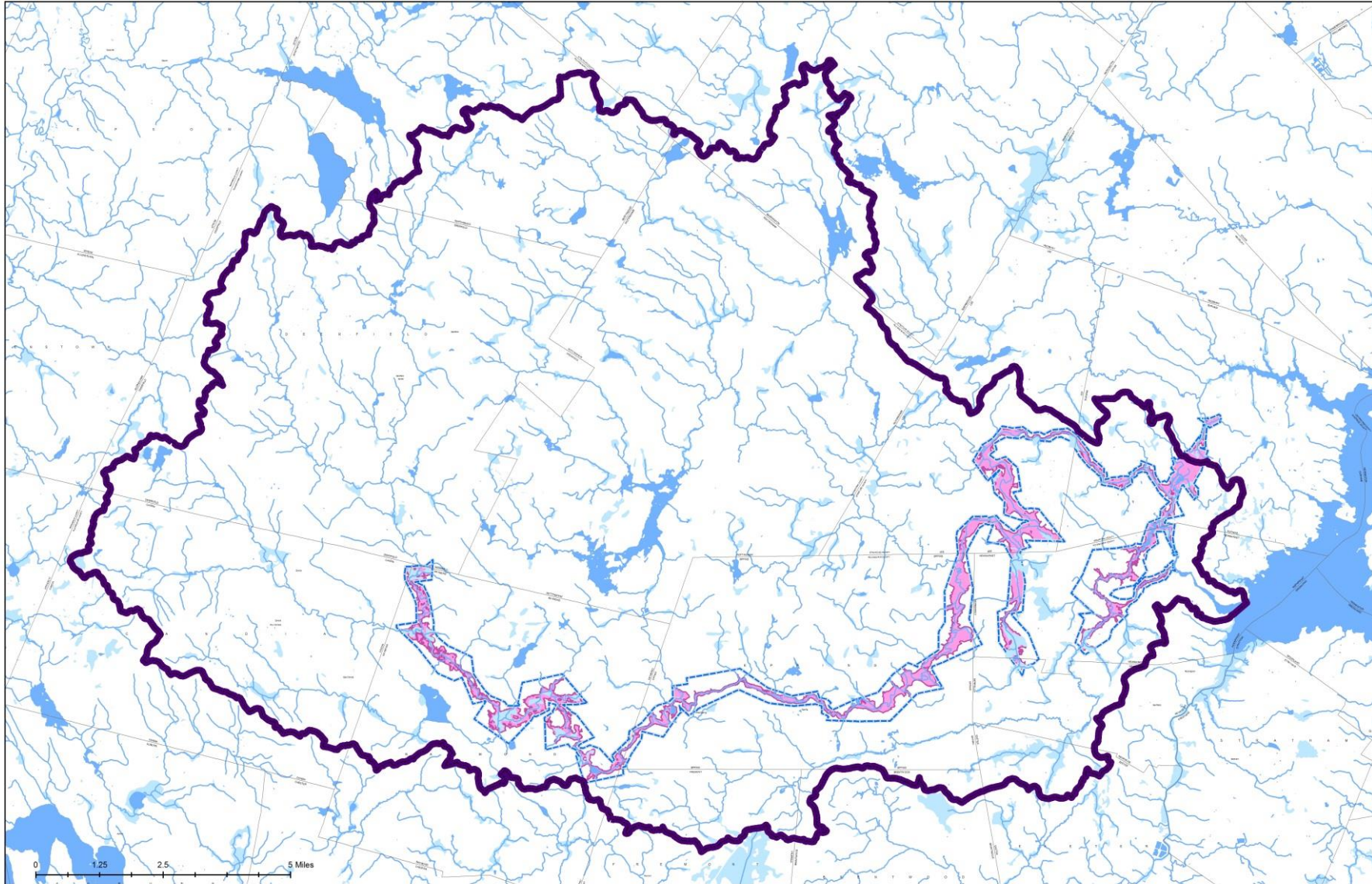


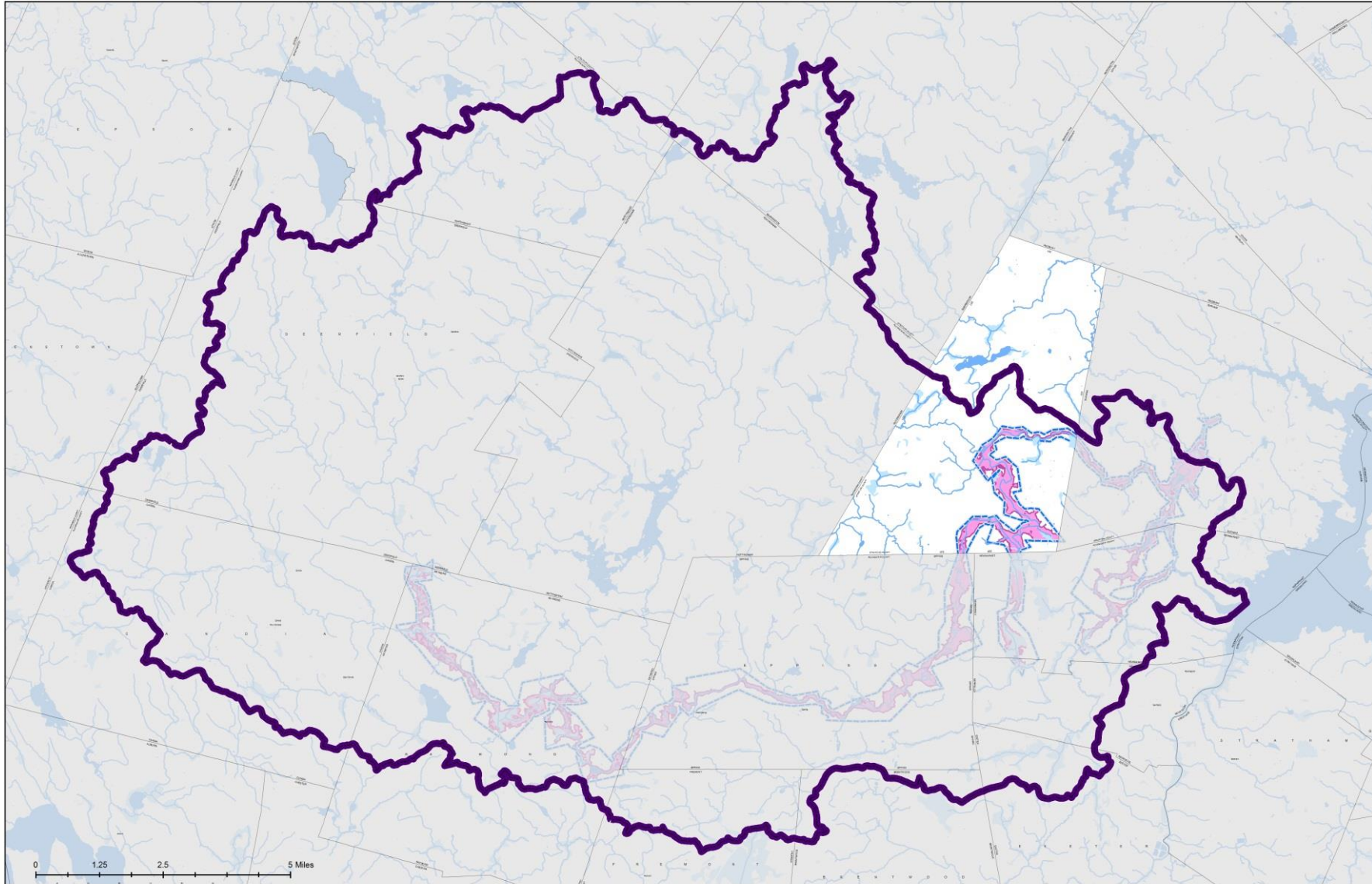
Forward-Looking Floodplain Mapping in Lee, NH

2021 Climate Summit
Wednesday, May 26, 2021

Applying regional research...



...to strengthen local regulations

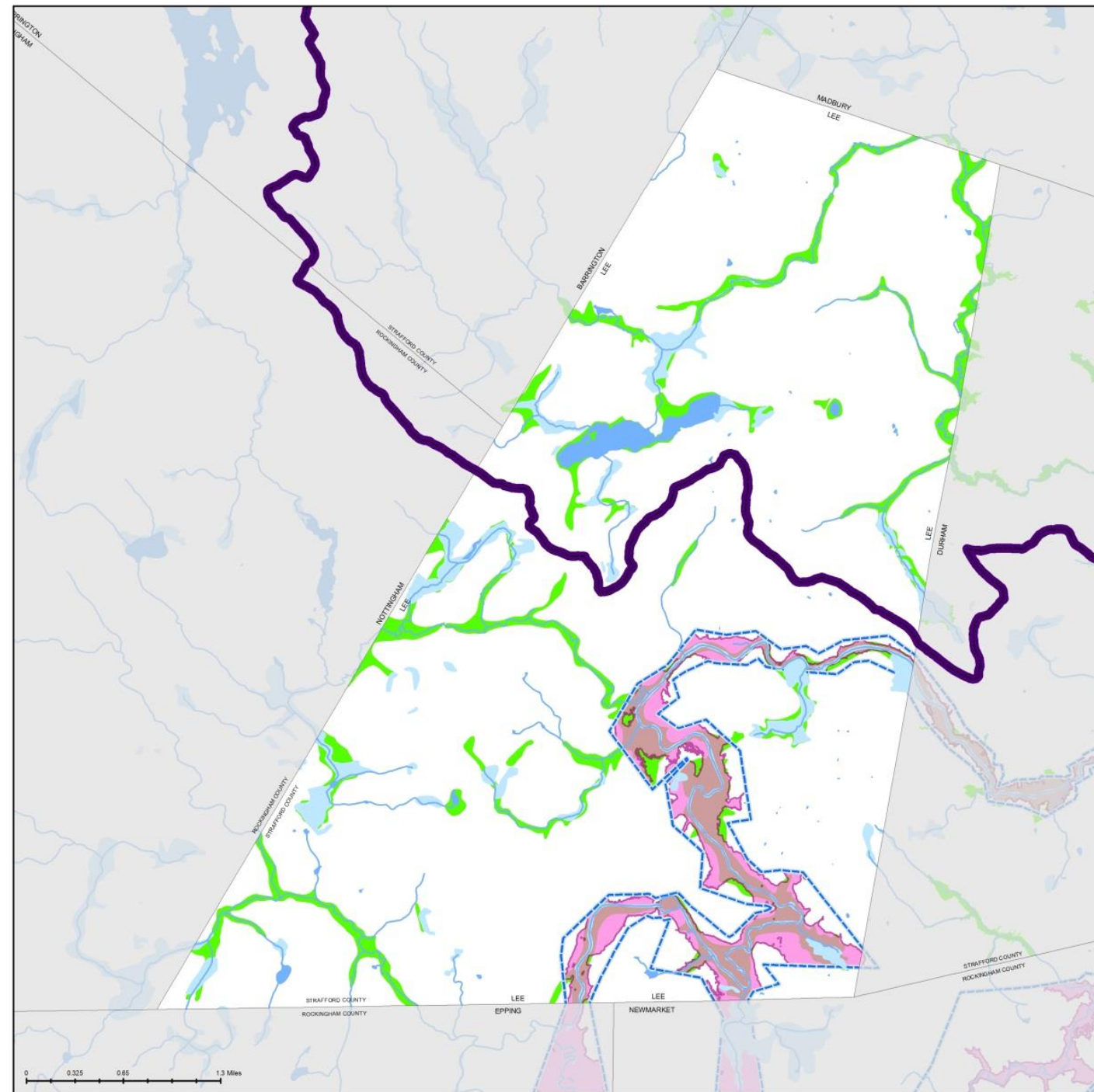


Revise the Town's Floodplain Ordinance

1. Review current design standards against OSI model
2. Include inundation areas referenced in Lamprey Study in floodplain ordinance



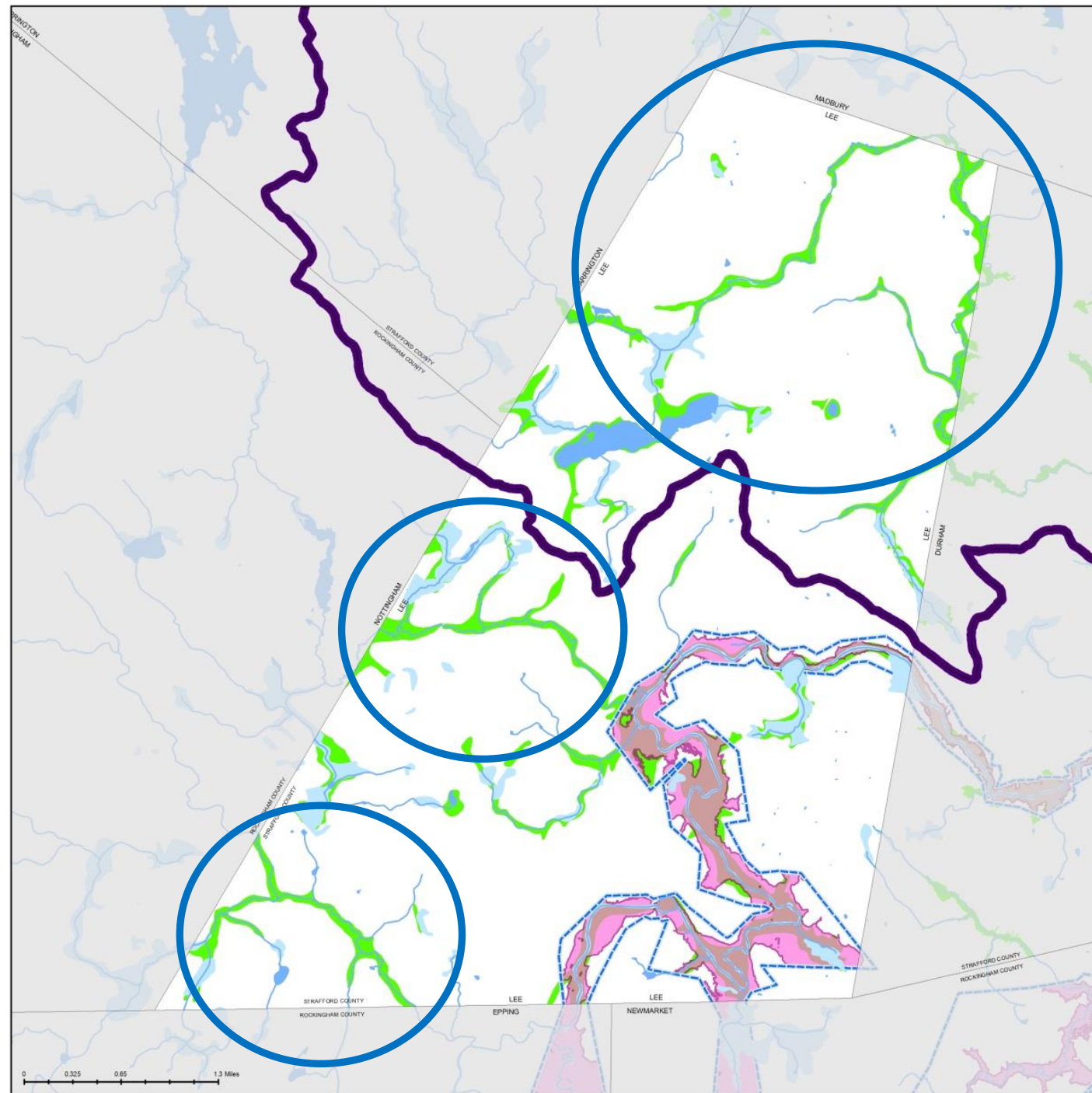
You know what happens when you assume...



...it makes an



out of you and me.

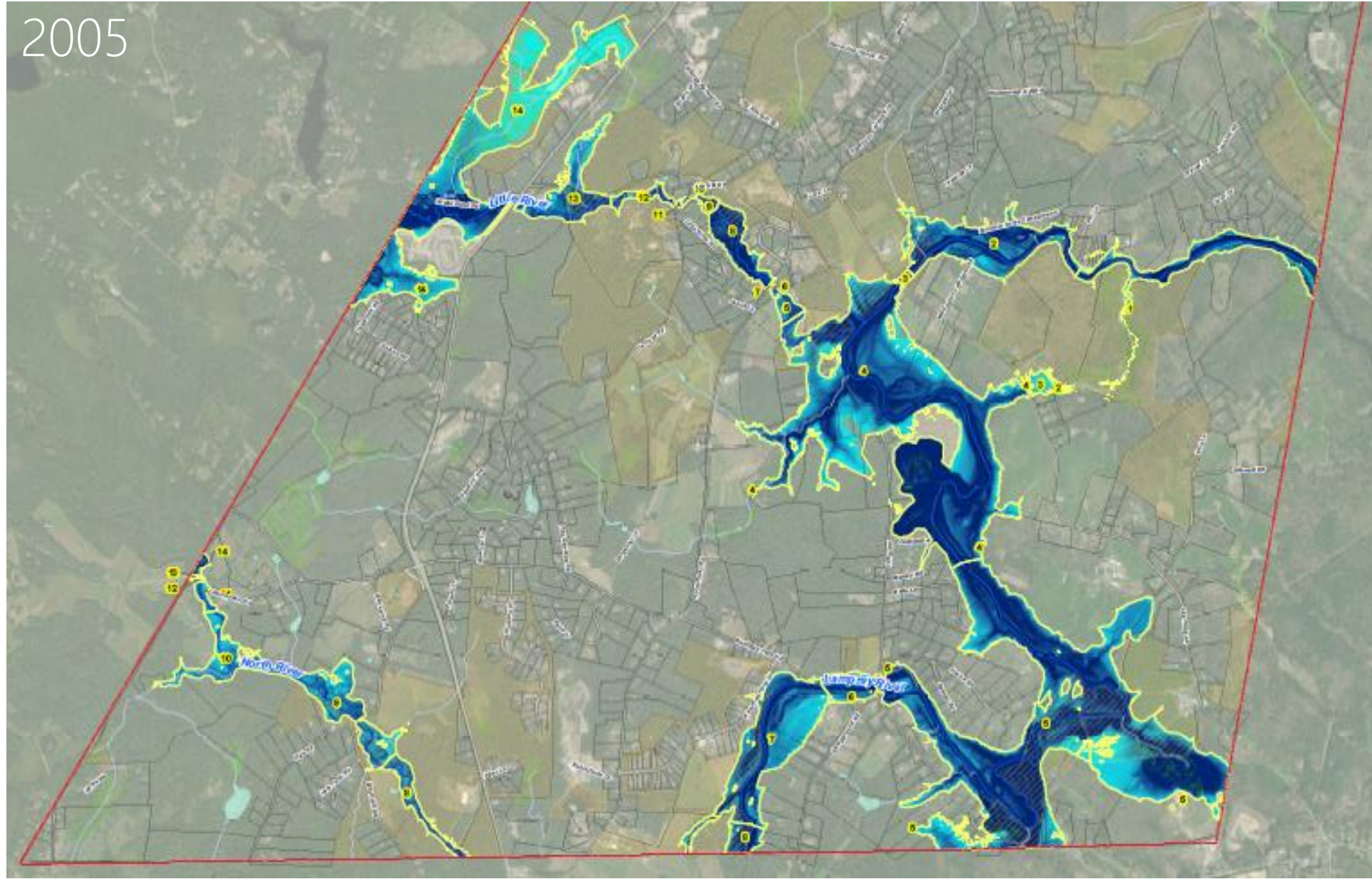


Know your limitations...

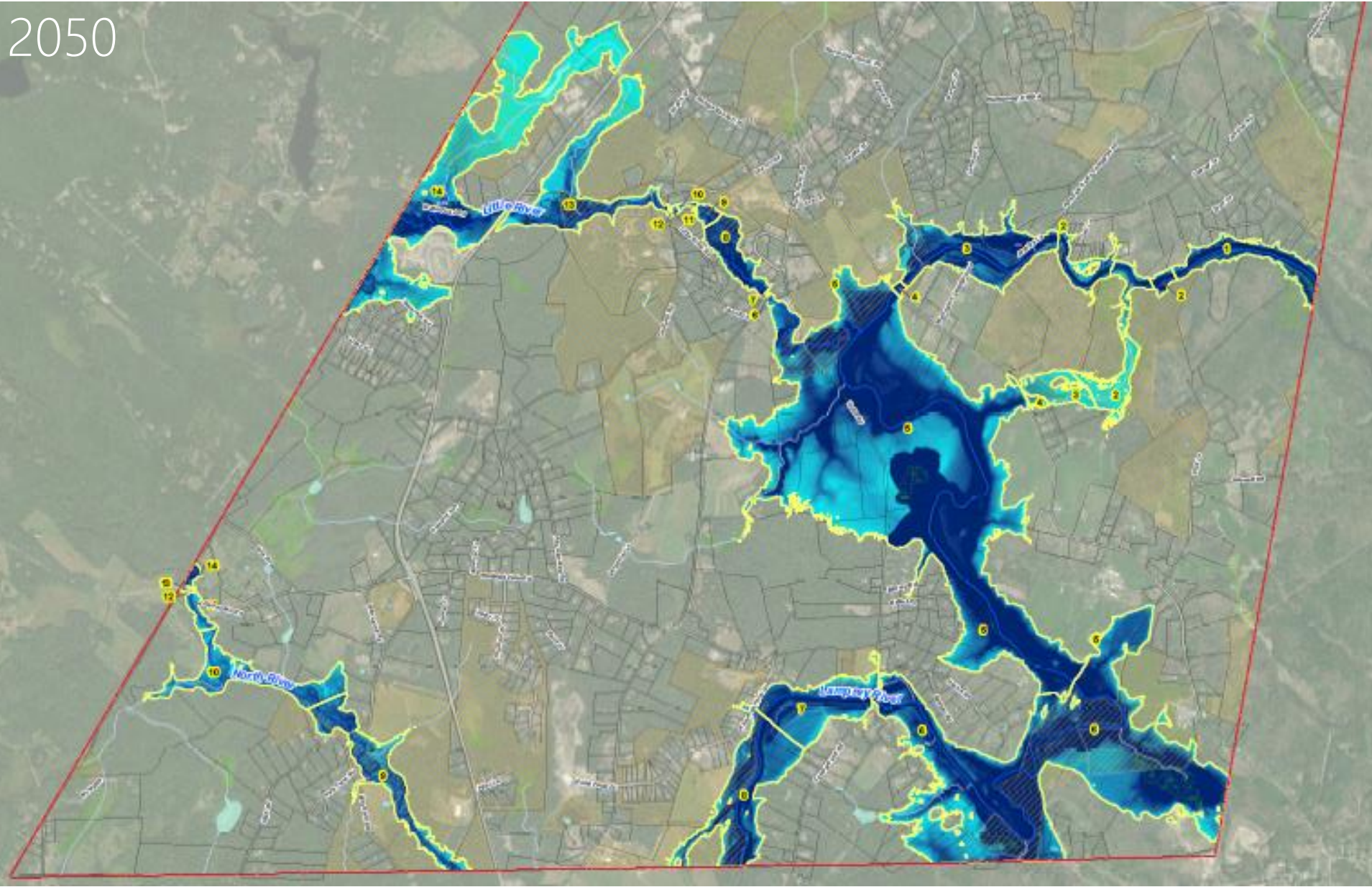
2005

Tasked with:

- Data Collection
- Hydrologic Modeling
- Hydraulic Modeling



...partner with technical experts



Projections included:

- 24 hour, 100-year storm
- 11.5" rainfall event (current is 8.5")
- Land use buildout

Community Benefits

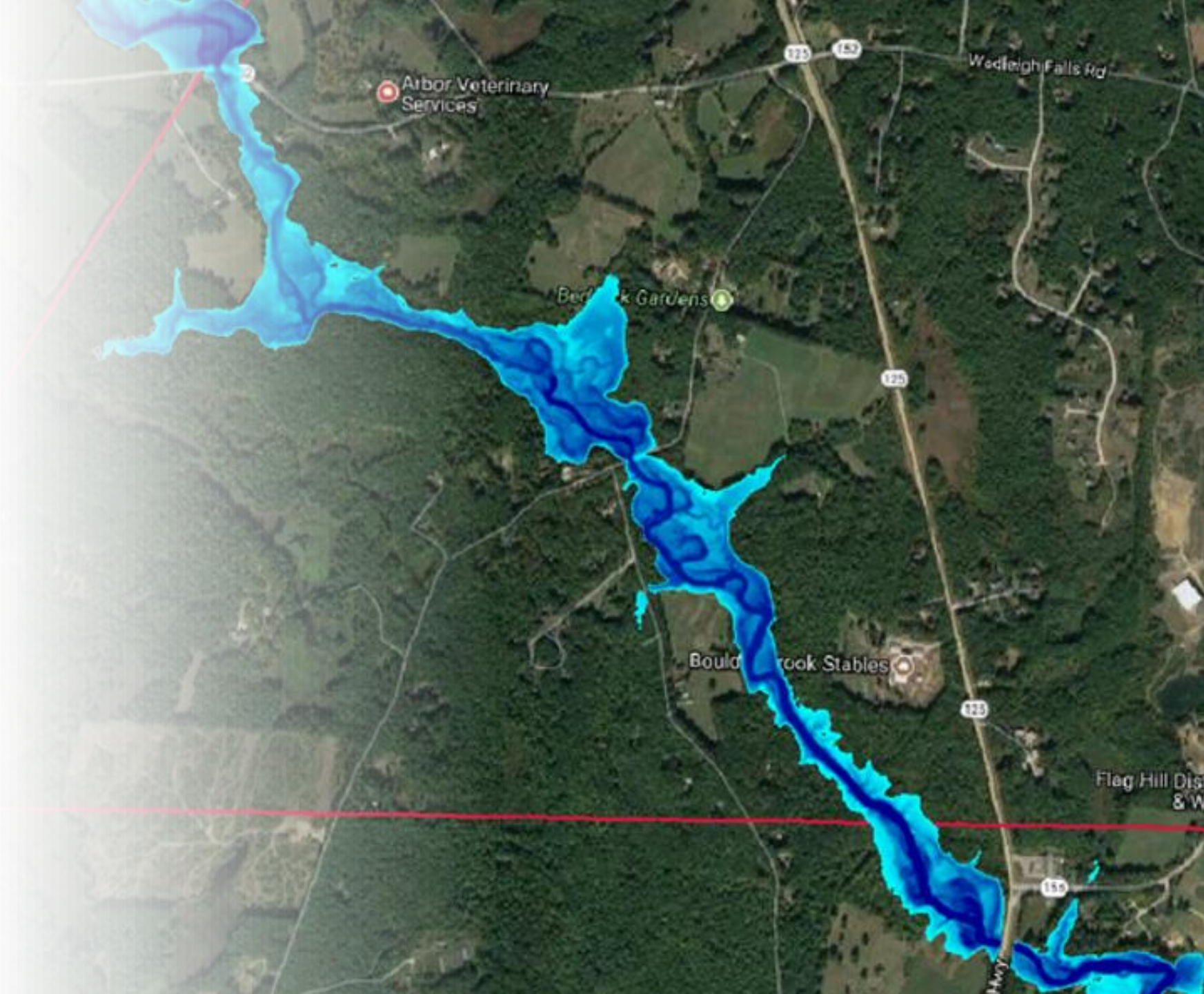
1. Planning level inundation maps

- Inundation boundaries
- Inundation depth
- Inundation elevation
- Town parcels
- Town conservation land

Lee does not have BFE data

2. Modeling data

- Watershed runoff
- Peak discharge estimates
- Culvert/bridge data
- DEM & river geometry



Community Benefits

1. Channel characteristics
 - Waterway boundaries and elevations, bank stations, etc.
2. Culvert characteristics
 - Diameter, material, etc.
3. Bridge characteristics
 - Span width, etc.





All we need is just a little patience...



Lamprey Study
Completed

Ad-Hoc
Committee

Additional
Funding

COVID19
Delays

2012

2013

2014

2015

2018

2019

2021

2022

Hazard
Mitigation Plan

Meeting w/
Planning Board


Revised
Regulations

Warrant
Article?



RESOURCEFUL • READY • RESILIENT

Thank You!

 Kyle Pimental
 603 994 3500
 kpimental@strafford.org
 www.strafford.org