



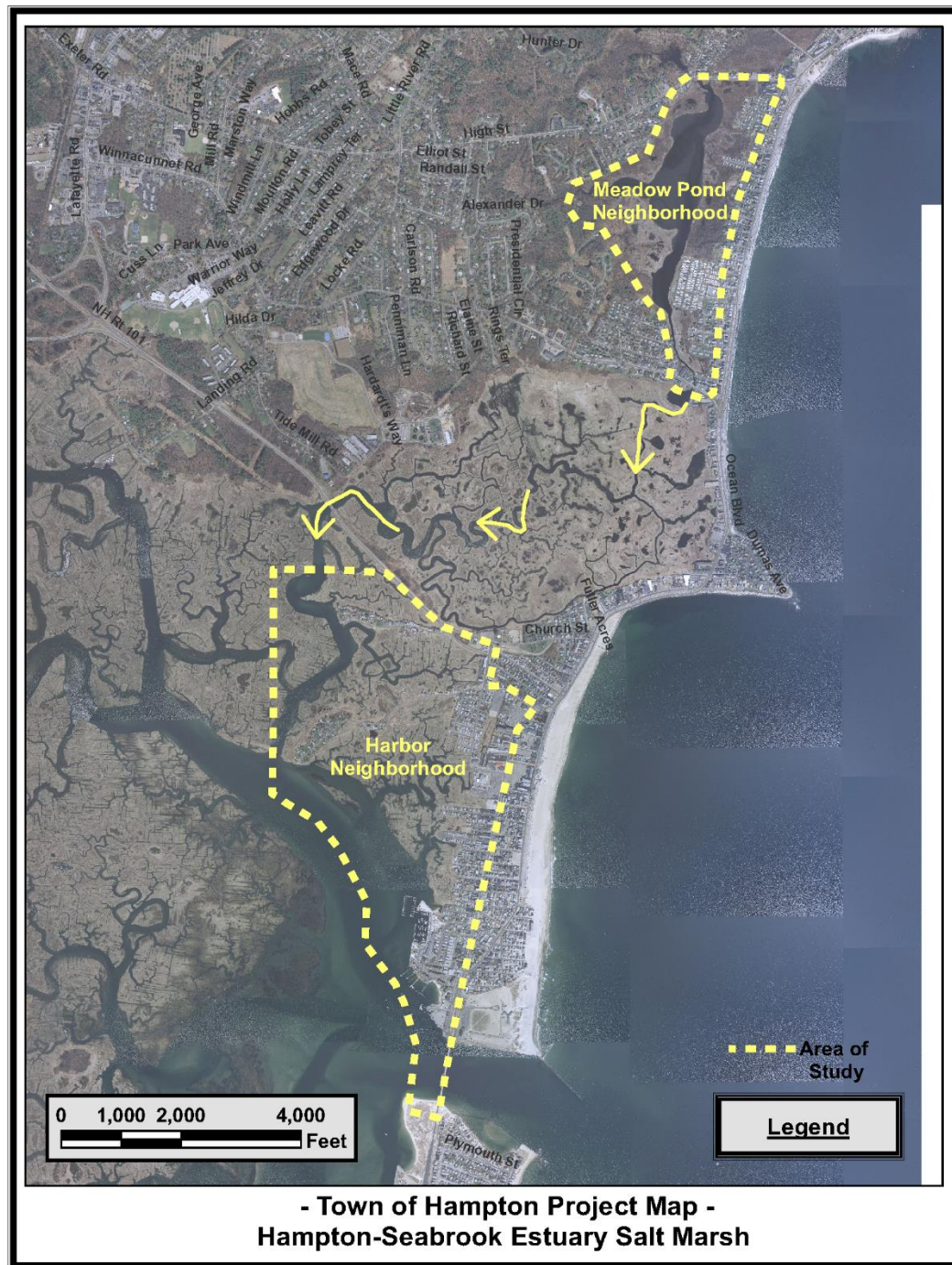
Local Climate Action Hampton, New Hampshire

Presented by

Jennifer Hale, PE, Town of Hampton
Director - Department of Public Works



New Hampshire Coastal Adaption Workgroup | May 26, 2021



Aerial – Meadow Pond



Green/Gentian

Kings Highway

Meadow Pond



2017 – Green Street



2018 – Gention Road



2018 – Gill Street



2018 - Kings Highway

Aerial – Hampton Harbor

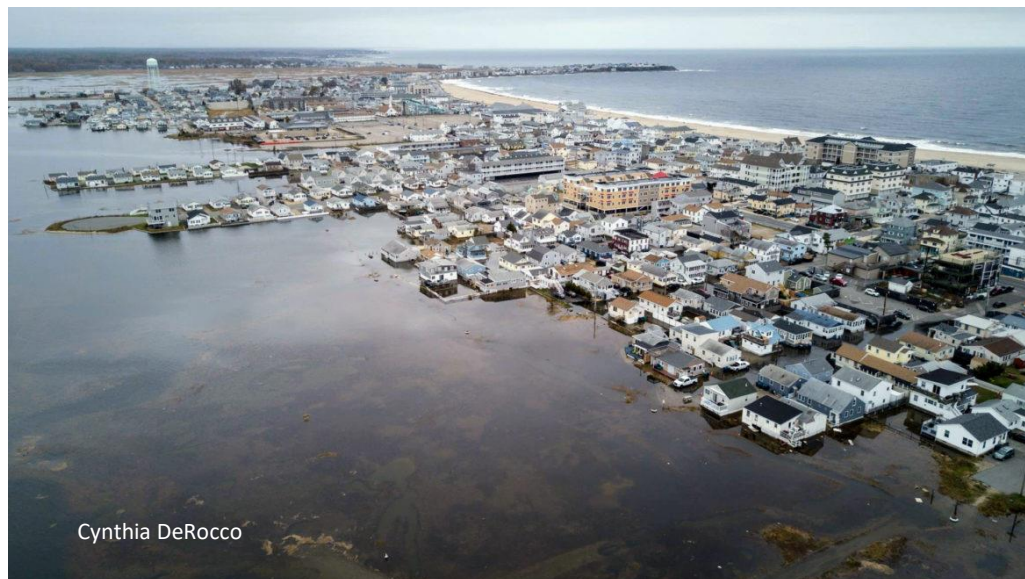




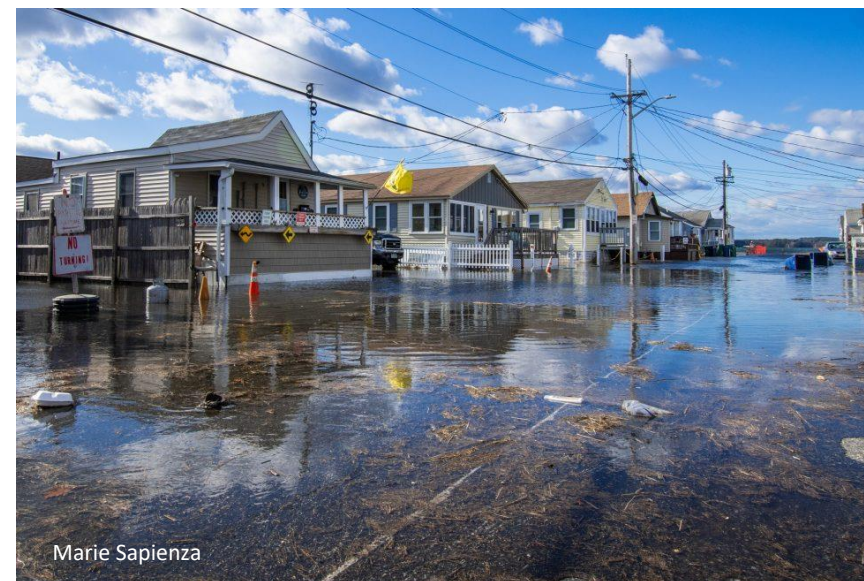
April 2007 – Ashworth Avenue



November 2019 King Tide – Brown Ave

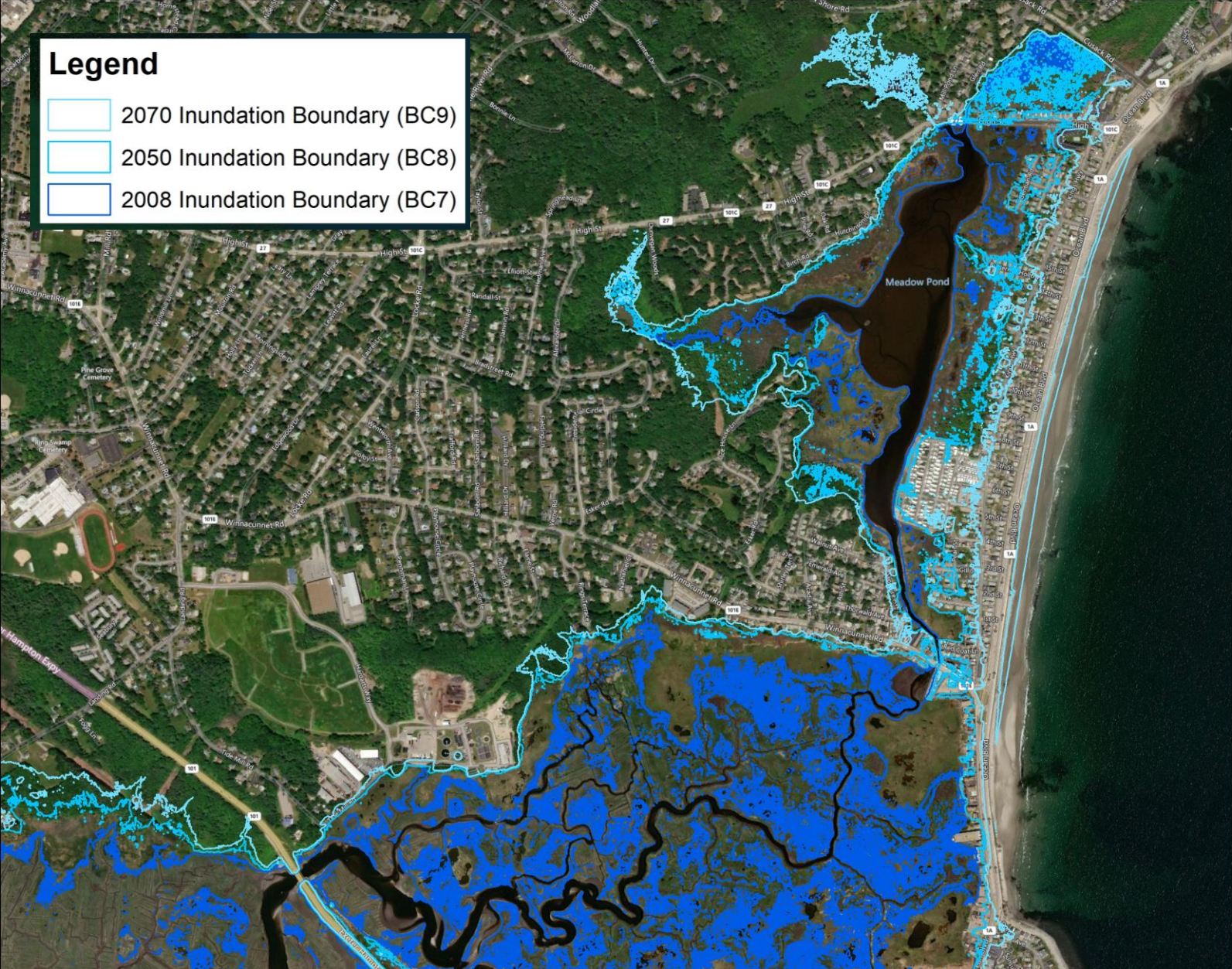


November 2017 – Aerial from Harbor



November 2020 King Tide – Harbor side

Existing Model Results – Spring Tides



Existing Model Results: Extent of Flooding



Alternatives Analysis Concepts

No Action

do nothing

Avoid

keep out of risk zones

Accommodate

elevate, raise roads, etc.

Resist

build walls, fill, etc.

Relocate

move to higher ground

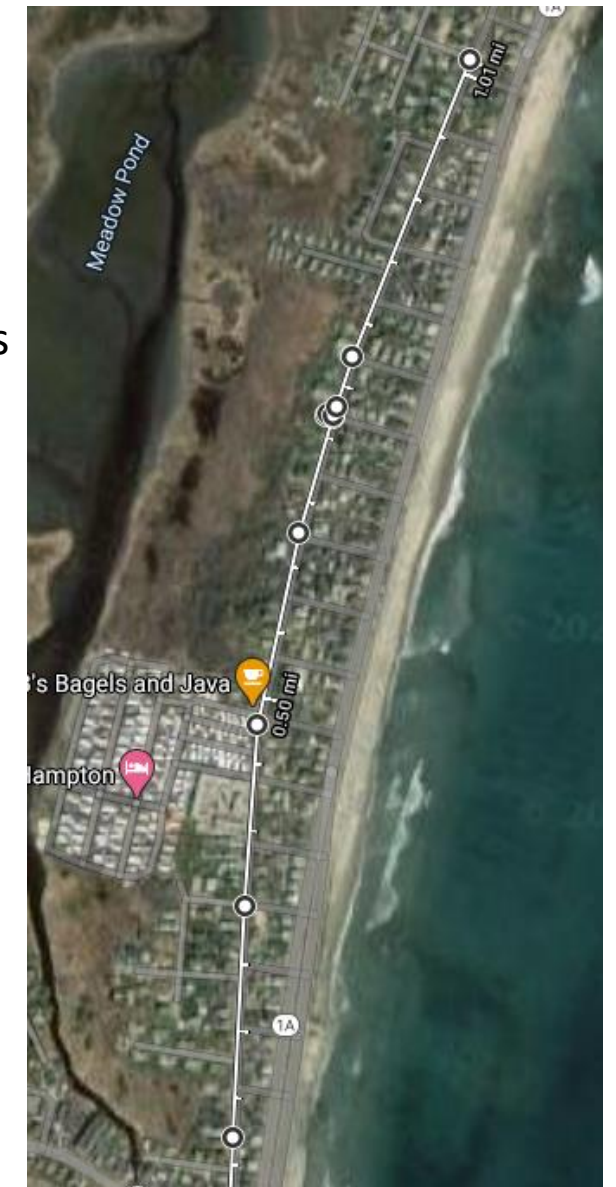
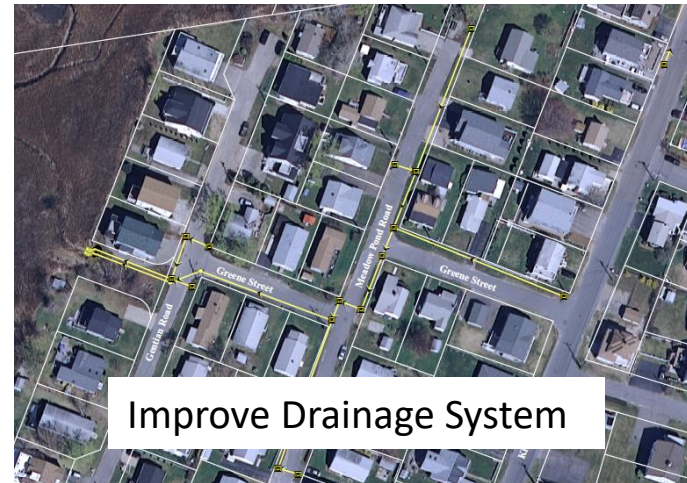


From NH coastal adaptation report and Hampton Coastal Resiliency Master Planning

Flood Mitigation Alternatives Meadow Pond

Alternatives Evaluated

- Replace Winnacunnet Road Culvert
- Meadow Pond Dredging/Phragmites Removal
- Elevate Roads
- Improve Drainage
- Creek Fill Removal
- Ditch Marsh Remediation
- Elevate Flood Prone Houses



Flood Mitigation Alternatives Hampton Harbor



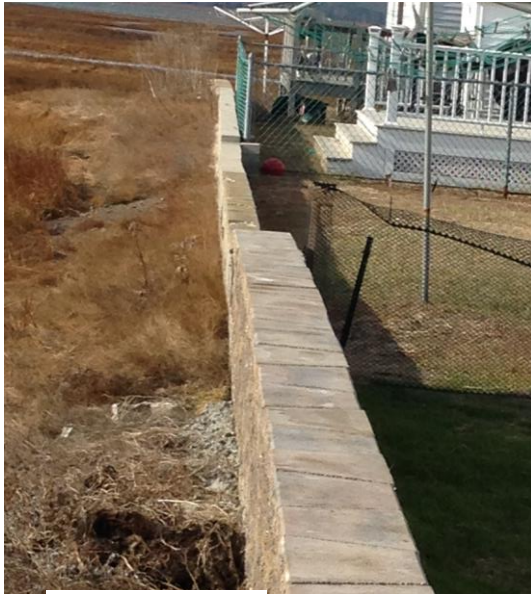
Raising of Structures

Alternatives Evaluated

- Improve Drainage Infrastructure
- Improve/Add Tide Gates and Backflow Valves
- Elevate Roads
- Elevate Structures
- Construct Barriers



Raising of Roads



Barriers



Temporary Walls



Tide Gates/Backflow Preventers

Recommended Alternatives (Not Modeled)

- Managed Retreat
- Regulatory Updates

NEW FLOOD REGULATIONS



Challenges Moving Forward



Votes to Secure Funding vs. Those Eligible



Sea Level Rise



No Immediate Fix



What Happens in the Mean Time?