



New Hampshire Setting SAIL

*Acting on the Coastal Risk and Hazards Commission Science,
Assessment, Implementation, and Legislation Recommendations*

Dover • Durham • Exeter • Greenland • Hampton • Hampton Falls • Madbury • New Castle • Newfields
Newington • Newmarket • North Hampton • Portsmouth • Rollinsford • Rye • Seabrook • Stratham

What Conservation Commissions can do to protect natural resources in a changing climate



Outline

1. Context

- NH Coastal Risk & Hazards Commission
- NH Setting SAIL

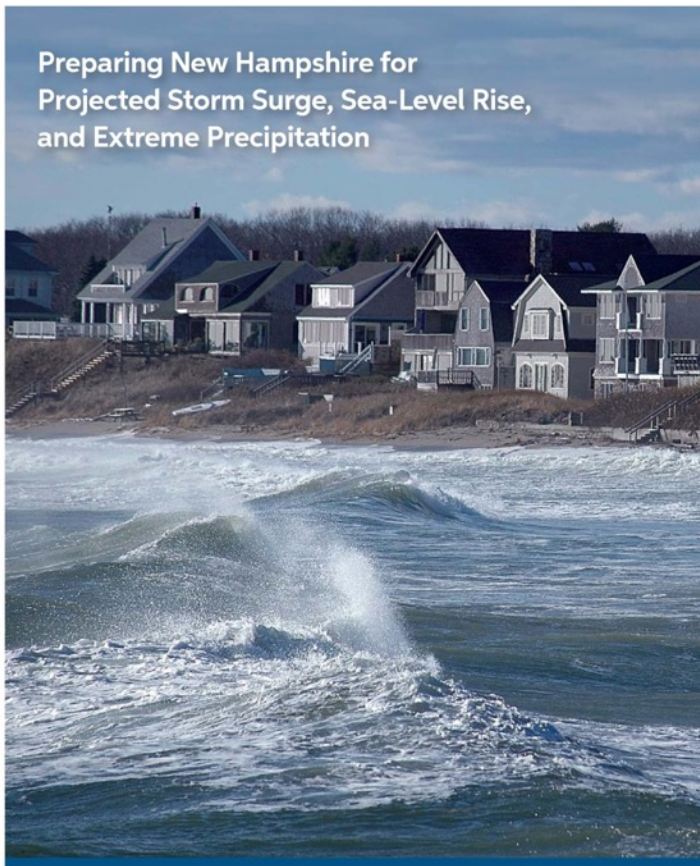
2. Impacts of Climate Change on Natural Resources

3. Actions Conservation Commissions can take

4. Discussion: Identify top 3 actions to take

NH Coastal Risk and Hazards Commission

NEW HAMPSHIRE COASTAL RISK AND HAZARDS COMMISSION



Final Report and Recommendations

November 2016



What We Are Facing



Our Risks & Vulnerabilities



What We Need To Do



Our Goals & Recommendations

What We Are Facing

2014 Science and Technical Advisory Panel (STAP) Report

SEA-LEVEL RISE

- ↑ 0.6 – 2.0 ft. by 2050
- ↑ 1.6 – 6.6 ft. by 2100

STORM SURGE

- ↑ Inundation extent
- ↑ Frequency
- ↑ Flood duration

EXTREME PRECIPITATION

- ↑ Frequency
- ↑ Amount





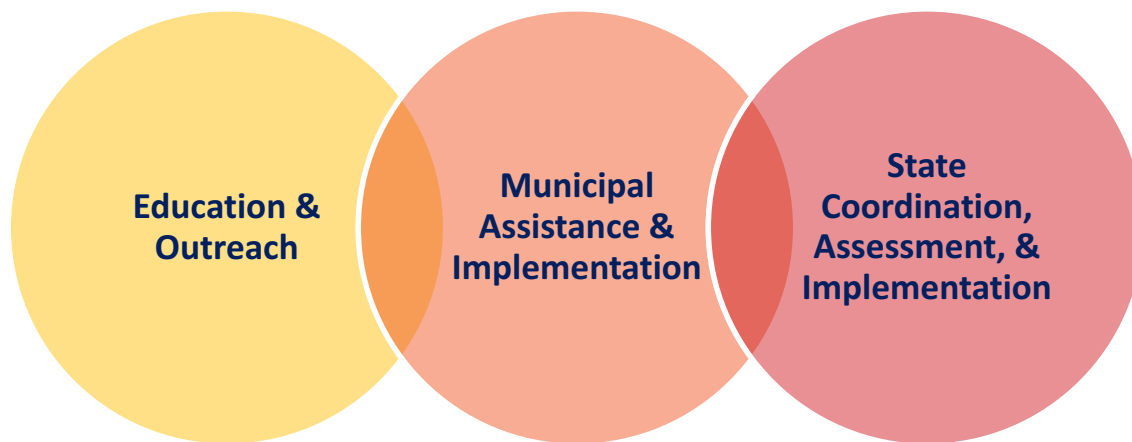
New Hampshire Setting SAIL

Acting on the Coastal Risk and Hazards Commission Science, Assessment, Implementation, and Legislation Recommendations

Dover • Durham • Exeter • Greenland • Hampton • Hampton Falls • Madbury • New Castle • Newfields
Newington • Newmarket • North Hampton • Portsmouth • Rollinsford • Rye • Seabrook • Stratham

SAIL: Science, Assessment, Implementation, Legislation

Goal: Support state and municipal implementation of the CRHC report through outreach and technical assistance



Our Risks and Vulnerabilities



Our Economy



Our Built Landscape



Our Natural Resources



Our Heritage



Invasive species, pests, & diseases



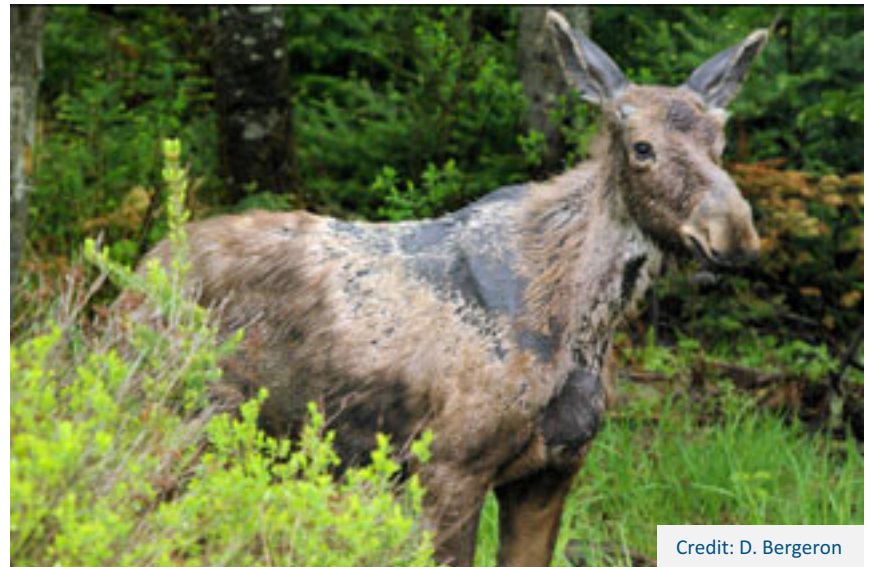
Credit: Outdoor Hub



Credit: UNH



Credit: Gabe Roxby



Credit: D. Bergeron



Flooding, erosion, & storm damage



Credit: AMC



Credit: Andy Knight



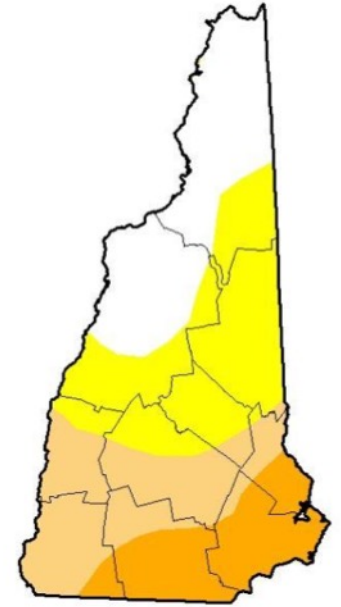
Credit: Kyle Pimental



Drought



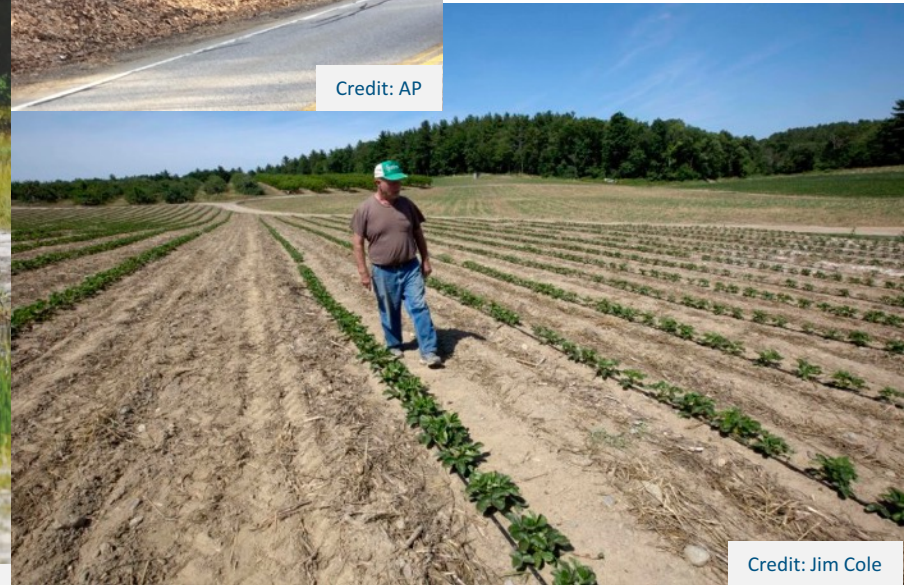
Credit: AP



Credit: US Drought Mitigation Center



Credit: David Lane



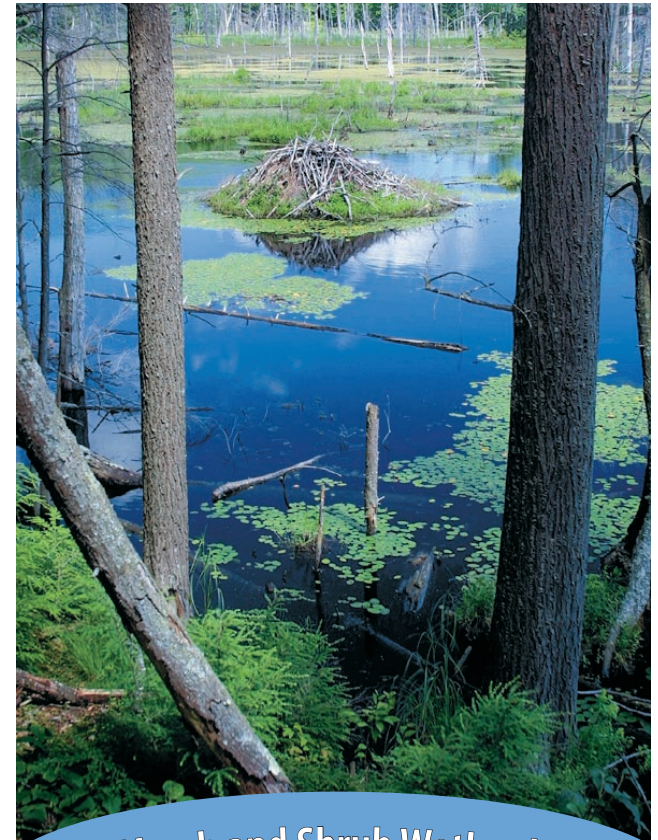
Credit: Jim Cole

1

Encourage landowners to preserve the beneficial functions of natural features



**UNH Cooperative Extension
Taking Action for Wildlife**



Marsh and Shrub Wetlands

Habitat Stewardship Series

NEW HAMPSHIRE WILDLIFE ACTION PLAN

2

Control invasive species



Credit: Emily Lord



Credit: Malin Clyde

**Stewardship Network
Picking Our Battles**

3

Communicate and build public awareness about climate change



NH Coastal Adaptation Workgroup (CAW)



Credit: FEMA

4

Incorporate climate change into municipal documents

Natural Resources Inventory

Town of Stratham, NH

October 2011

Prepared by the Town of Stratham Conservation
Commission with support from the Rockingham
Planning Commission and grant funds from the
New Hampshire Coastal Program

Newmarket Open Space Conservation Plan



Prepared for the Town of Newmarket
by
Ellen Snyder, Ibis Wildlife Consulting
June 2007

This project was funded by a grant from the New Hampshire Estuaries Project,
as authorized by the U.S. Environmental Protection Agency's
National Estuary Program



Wagon Hill Farm

Stewardship Plan



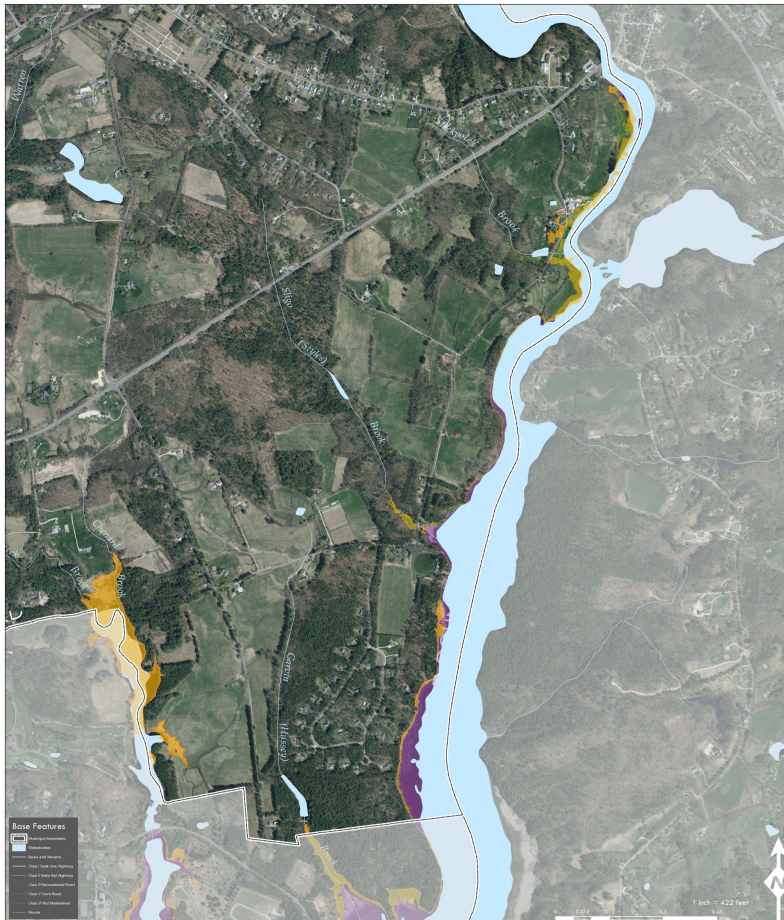
Prepared for the
Durham Conservation Commission

Prepared by
Ellen Snyder
Ibis Wildlife Consulting

**UNH Cooperative Extension
Regional Planning Commissions**

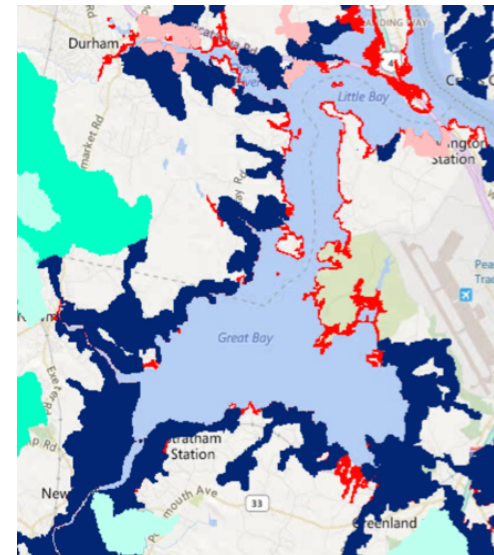
5

Add climate vulnerability and adaptation benefits to land conservation criteria



Tides to Storms and C-RiSe Maps & Reports

Land Conservation Priorities for the Protection of Coastal Water Resources (2016)



NH Coastal Viewer Data

Other Actions

Management & Restoration



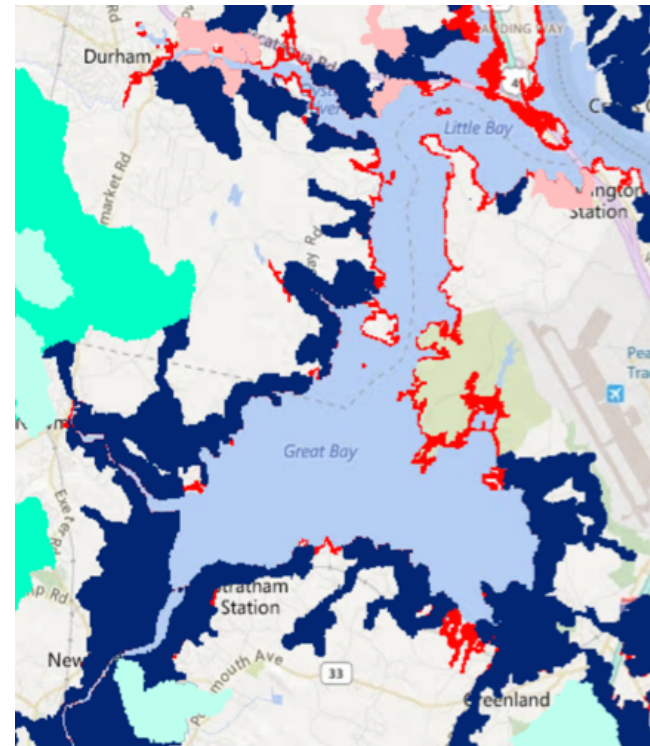
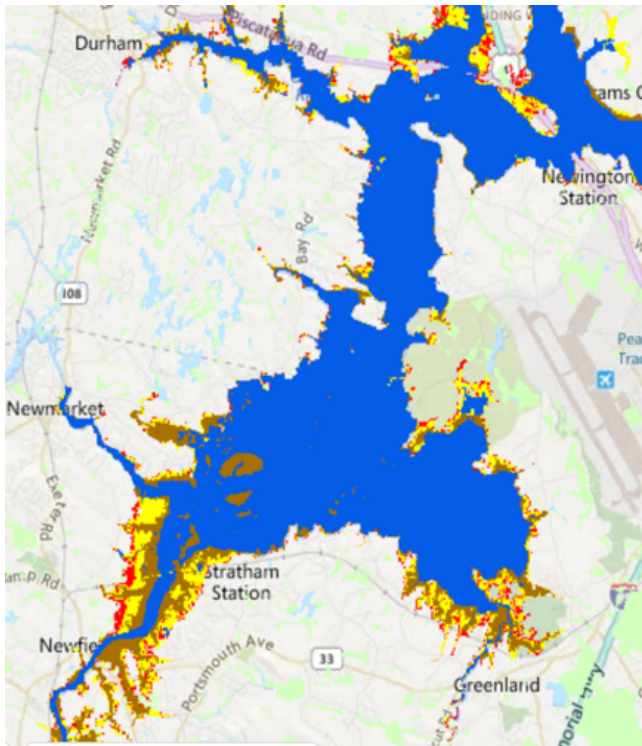
Credit: Emily Lord



Credit: Emily Lord

Other Actions

Land Conservation



Other Actions

Land Use Planning & Regulation



Other Actions

Communicating & Educating



Resources & Help

- Information, Maps, and Other Resources
- Potential Funding Sources
- Organizations



NEW HAMPSHIRE COASTAL RISK AND HAZARDS COMMISSION

Preparing New Hampshire for
Projected Storm Surge, Sea-Level Rise,
and Extreme Precipitation

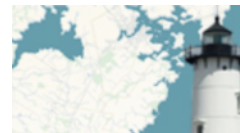


FROM TIDES TO STORMS: PREPARING
FOR NEW HAMPSHIRE'S FUTURE COAST

Assessing Risk and Vulnerability of Coastal Communities
to Sea Level Rise and Storm Surge

Recommendations

November 2016



NH COASTAL VIEWER



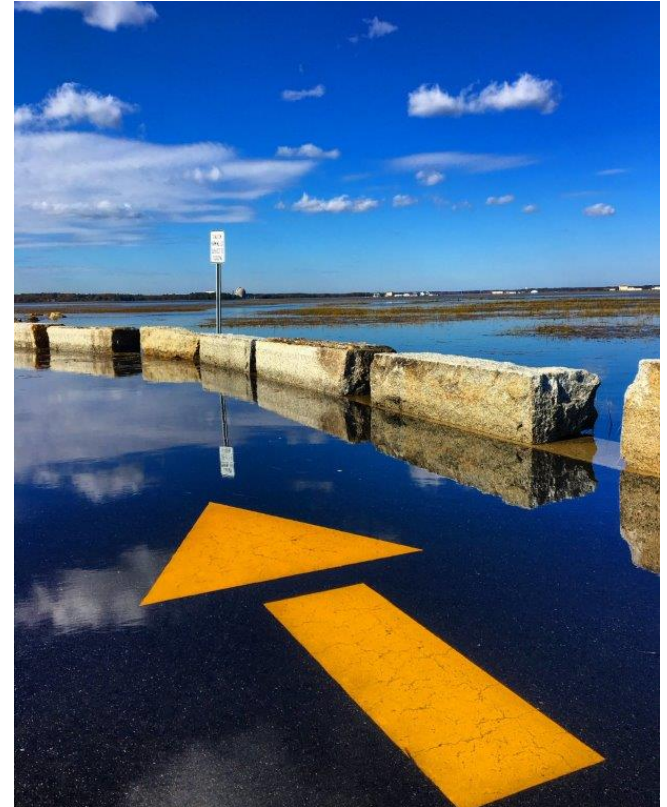
For more information, contact:

Lisa Graichen

NH Sea Grant/UNH Cooperative Extension
(603) 862-2356 / lisa.graichen@unh.edu

Amanda Stone

UNH Cooperative Extension
(603) 862-1067 / amanda.stone@unh.edu



Credit: Nathalie Morison, King Tide Photo Contest 2016



Extension

