

Downpours and Drought

Managing for Extremes...

NH Coastal Adaptation Workgroup
October 26, 2016

Our Pond Sept 2016



Our Pond April 2007



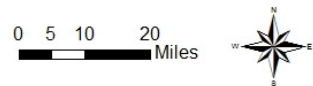
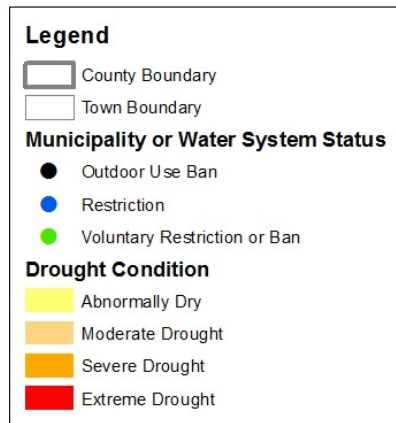
The current drought condition is a very slow-moving natural disaster that may continue to worsen

- Southern New Hampshire is experiencing a drought emergency
- We have received about 50% of our normal rainfall over the last six months
- Stream flow and groundwater levels are at historic low levels



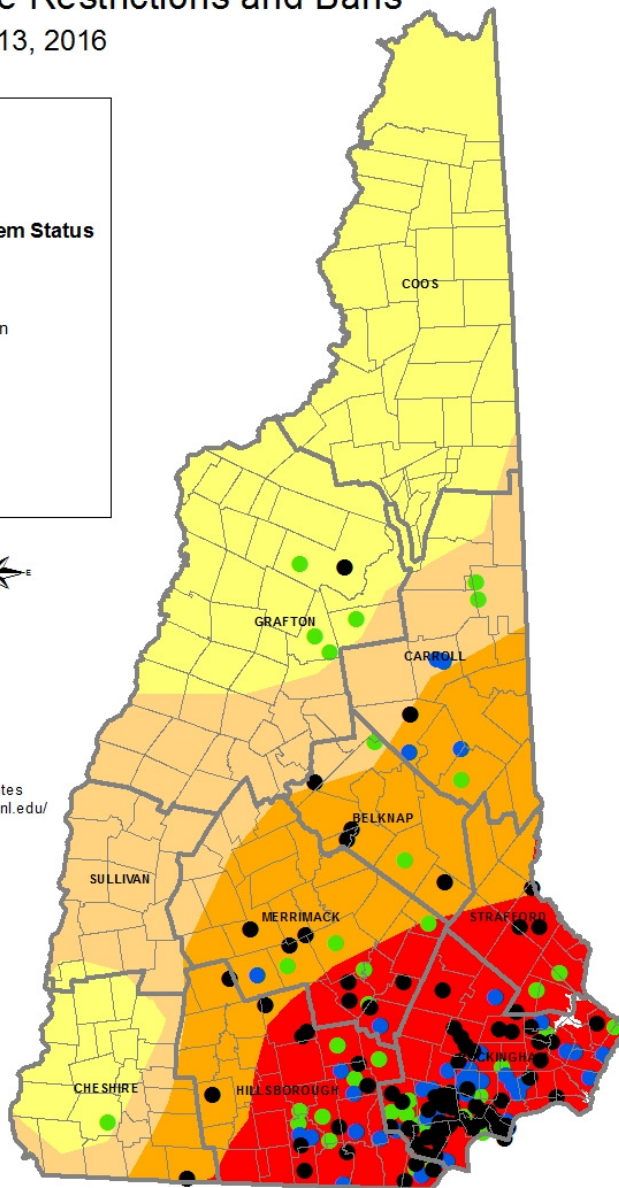
Known Water Use Restrictions and Bans

Last Update: October 13, 2016



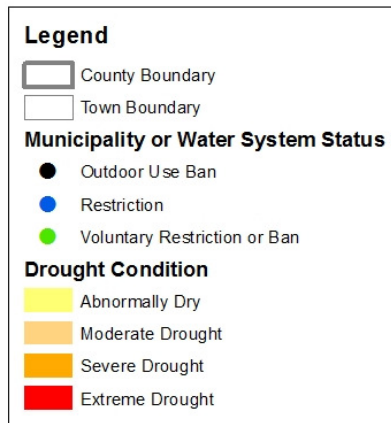
Drought Conditions based on United States Drought Monitor (<http://droughtmonitor.unl.edu/Home/StateDroughtMonitor.aspx?NH>)

Disclaimer: The status of water use restrictions and bans is based on information submitted to the New Hampshire Department of Environmental Services and may not be comprehensive.



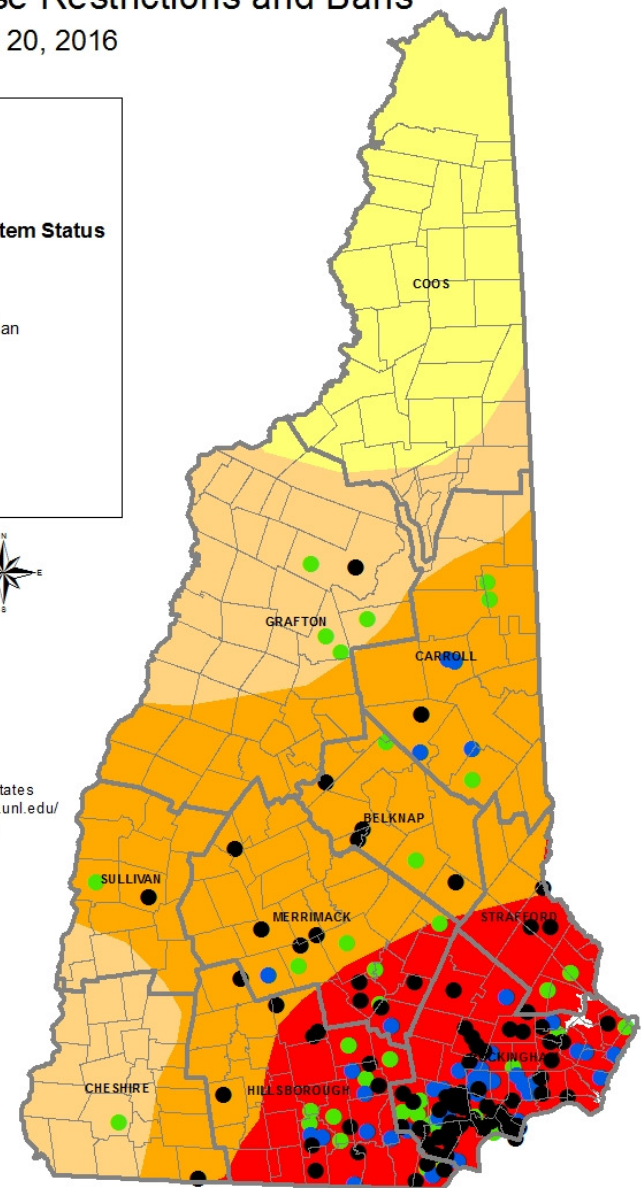
Known Water Use Restrictions and Bans

Last Update: October 20, 2016



Drought Conditions based on United States Drought Monitor (<http://droughtmonitor.unl.edu/Home/StateDroughtMonitor.aspx?NH>)

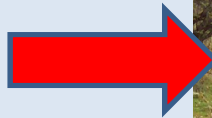
Disclaimer: The status of water use restrictions and bans is based on information submitted to the New Hampshire Department of Environmental Services and may not be comprehensive.



Droughts

- Multi-year events; take some years to develop. This will be felt for longer than one season
- Infiltrated water will wet dry soil particles before reaching the groundwater; ET continues through leaf off
- High intensity rain fall could cause more runoff and flash flooding; less infiltration

Usual water level



Best Scenario

- Medium intensity of rain over long duration
- Stream flow will increase but not flood; ground water will gradually increase
- Just because we are in a drought doesn't mean we can't get flooding!



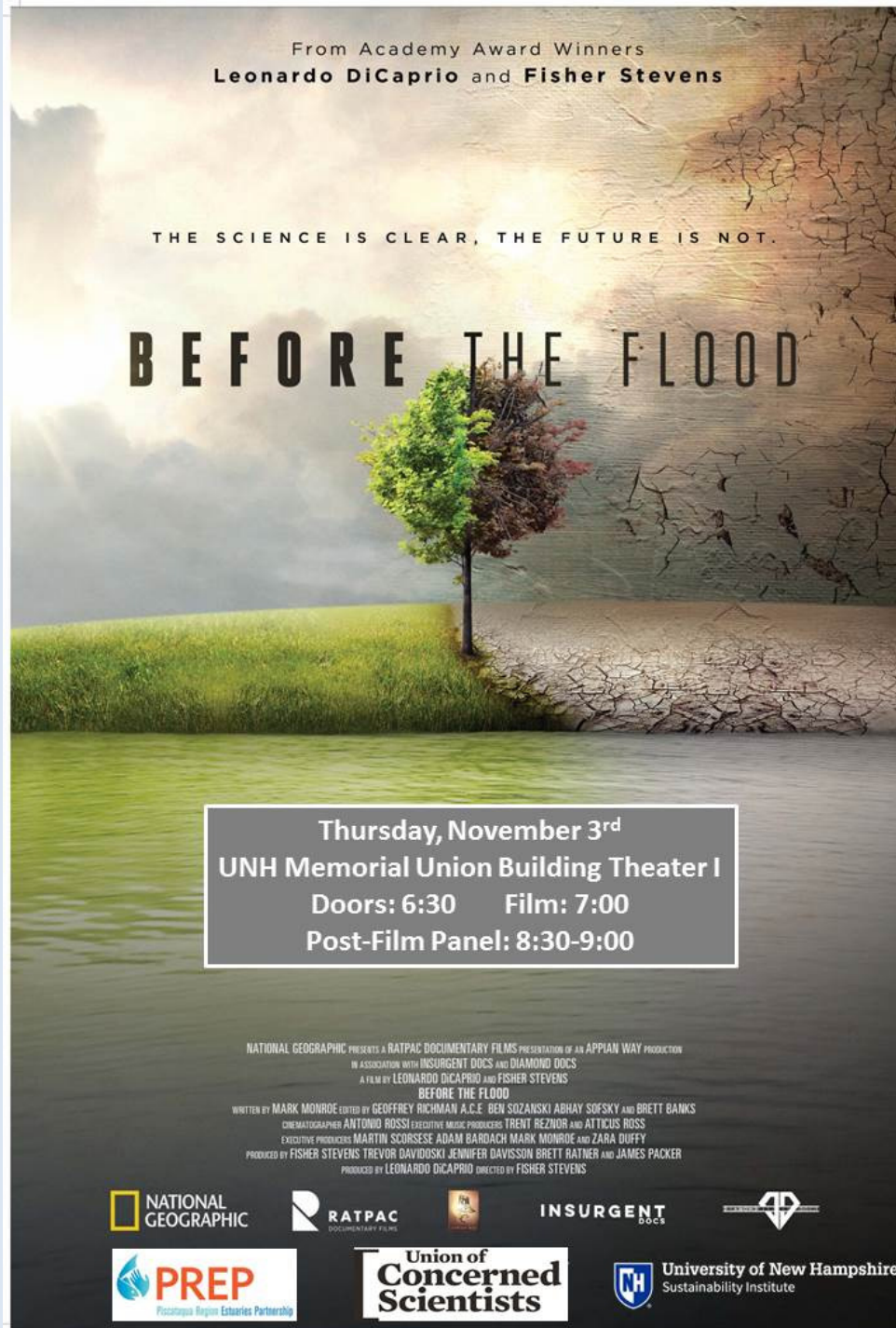
Downpours and Drought

- We need to plan for both flooding and drought
- Low Impact Development (LID) is good for both conditions
- Today we will talk about the scales at which these can happen – residential, community, watershed level



Moving Forward

- **The power of redevelopment for drought and floods**
- **What is “redevelopment”?**
 - a change in use or expansion of an existing use
 - development of abandoned property
- **Redevelopment can slowly add more resilience to the built landscape**
 - e.g. aging infrastructure and the need for upgrades
- **Regulated by municipal planning boards by Site Plan Review Regulations and NHDES Alteration of Terrain permit**



November 3, 2016
UNH MUB
6:30 pm King Tide
Photos
7:00 pm film
8:30 discussion

