

New Hampshire Coastal Risks and Hazards Commission UPDATE

Coastal New Hampshire Climate Summit
Science to Support Action

June 19, 2015

Senator David Watters, District 4
Senator Nancy Stiles, District 24
Cliff Sinnott, Chair, CRHC

Coastal Risk & Hazards Commission

(RSA 483-E)

- SB-163 Introduced by Sens. Watters, Stiles, Clark and enacted as RSA 483-E in July 2013
- **Purpose:** *“recommend legislation, rules, and other actions to prepare for projected sea level rise and other coastal and coastal watershed hazards such as storms, increased river flooding, and storm water runoff, and the risks such hazards pose to municipalities and state assets in New Hampshire”*
- Began work in August 2013; will sunset in December 2016

Commission Membership (= 37)

- 2 Senators, 2 House members
- Reps from 17 coastal & tidal municipalities
- State Agency designees from:

NHDES

NH Fish & Game

NHDOT

Bureau of Public Works

NH Office of Energy & Planning

DRED – Commissioner's office

Div. of Parks and Recreation (DRED)

Div. of Historic Resources (DCR)

- Other Stakeholders:

NH Homebuilders

Seacoast Board of Realtors

UNH - SeaGrant

UNH – Pres. designee

PRIMEX

NHMA

Strafford RPC

Rockingham RPC

Impacts from a Warming Climate on Coastal Areas

- Sea Level Rise
- More Intense or More Frequent Coastal Storms
- Extreme Precipitation
- Ecosystem Changes & Losses
- Drought
- Temperature Regime
- Others

Impacts from a Warming Climate on Coastal Areas

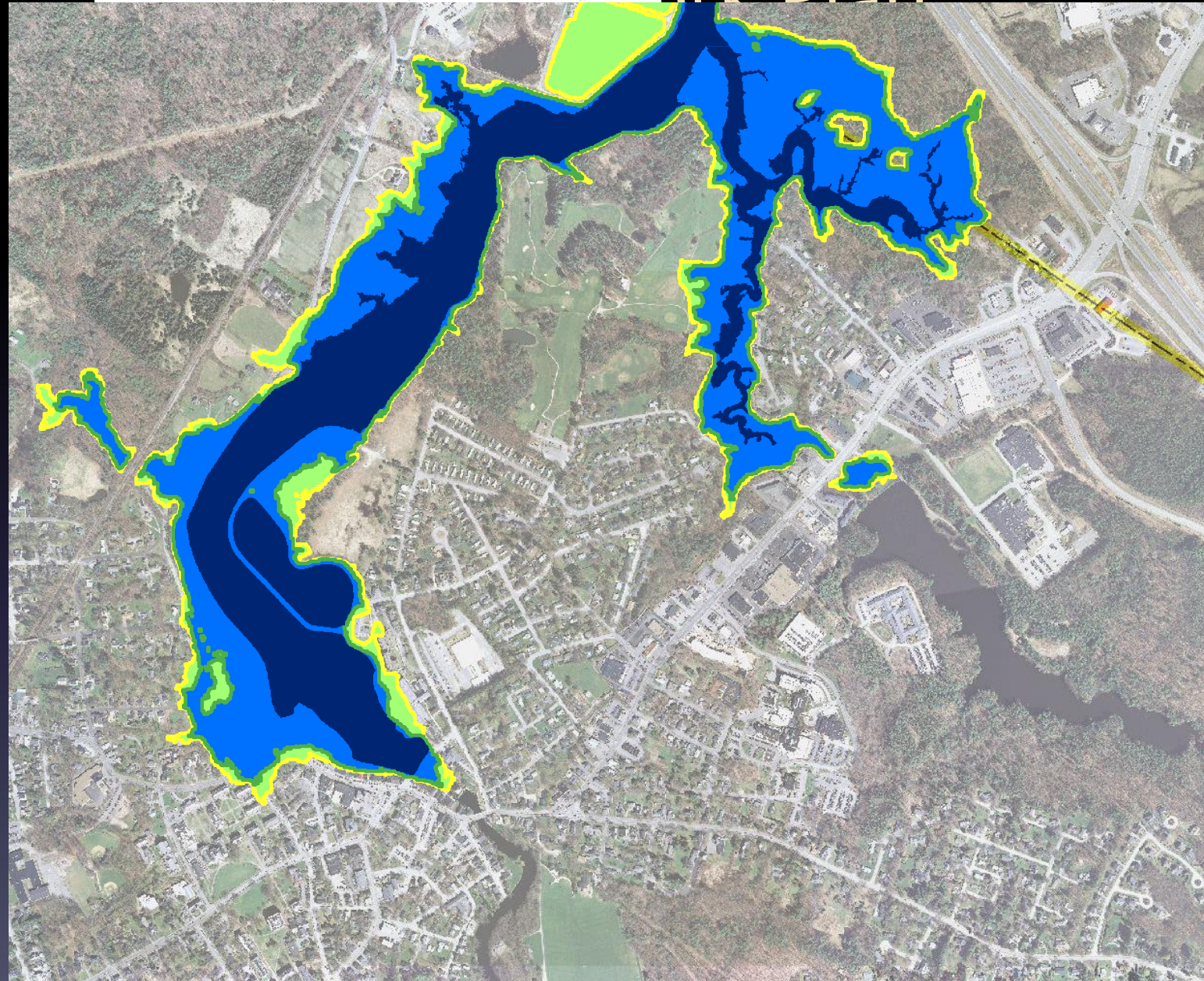
- Sea Level Rise
- More Intense or More Frequent Coastal Storms
- Extreme Precipitation
- Ecosystem Changes & Losses
- Drought
- Temperature Regime
- Others

Key Questions

- What future condition should we be planning for? What does the best science tell us?
 - Sea level rise
 - Storm surge
 - Changes in precipitation
- What are the impacts?
 - Which areas, what assets will be effected
- What should we do about it?
 - What recommendations, what actions, by who, when

Work Plan

	2013	2014	2015	2016
	Fact Finding		Assessment/Evaluate & Recommendations	Reporting & Outreach



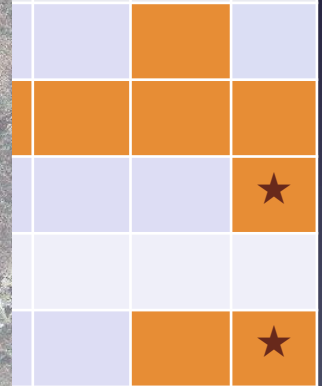
100-year flood or 1% chance flood

2016

Reporting & Outreach

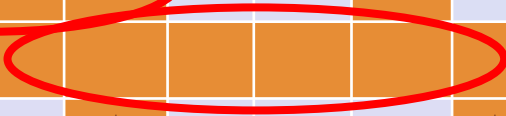
Q2 Q3 Q4

XX XX XX



What's Next

	2013		2014				2015				2016			
	Fact Finding						Assessment/Evaluate & Recommendations				Reporting & Outreach			
TASKS	Q3	Q4	Q1	Q2	Q3	Q4	Q1	Q2	Q3	Q4	Q1	Q2	Q3	Q4
CRHC Meetings	XX	XX	XXX	XXX	XXX	XX	XX	XX	XXX	XXX	XX	XX	XX	XX
Science Advisory Panel					★									
Sector Working Groups							★							
Vulnerability Assessment									★					
Other Research														
Eval. Responses/ Measures														
Dev. Recommendations														
Outreach & Engagement														
Legislative Reports		★				★								★
Draft Report														
Final Report														★



More Information

Website – via StormSmartCoasts NH

<http://nh.stormsmart.org>

<http://nhcrhc.stormsmart.org>