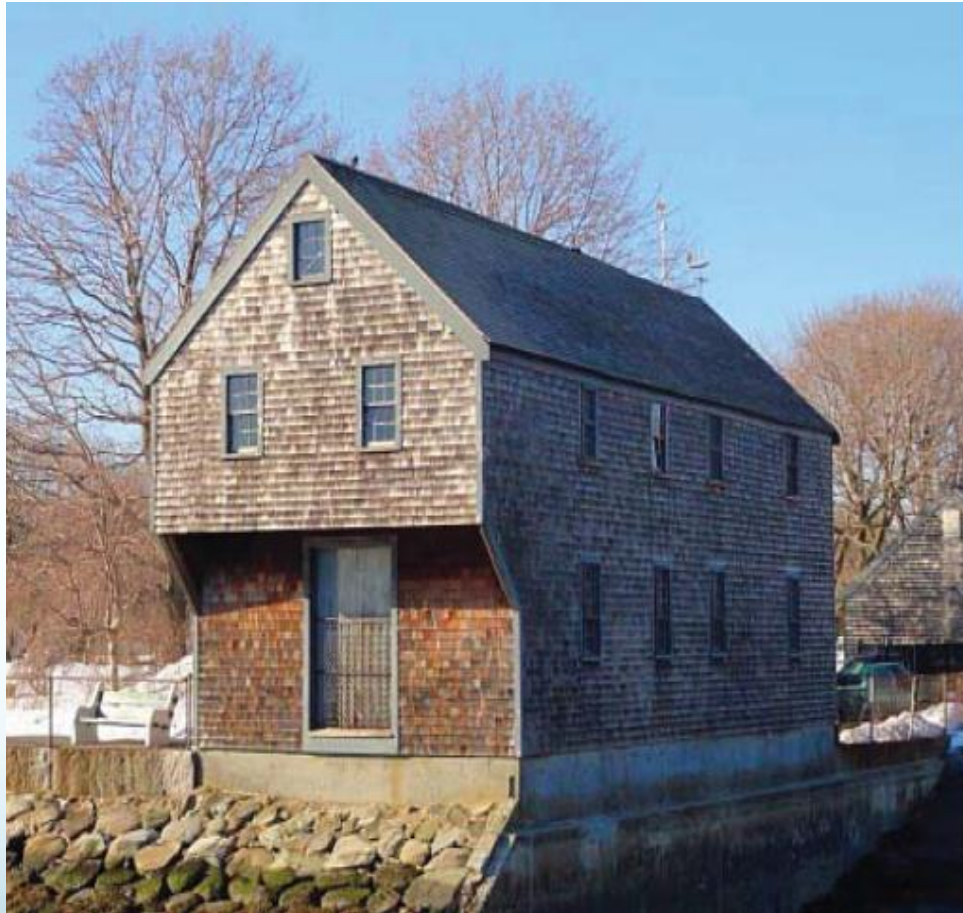
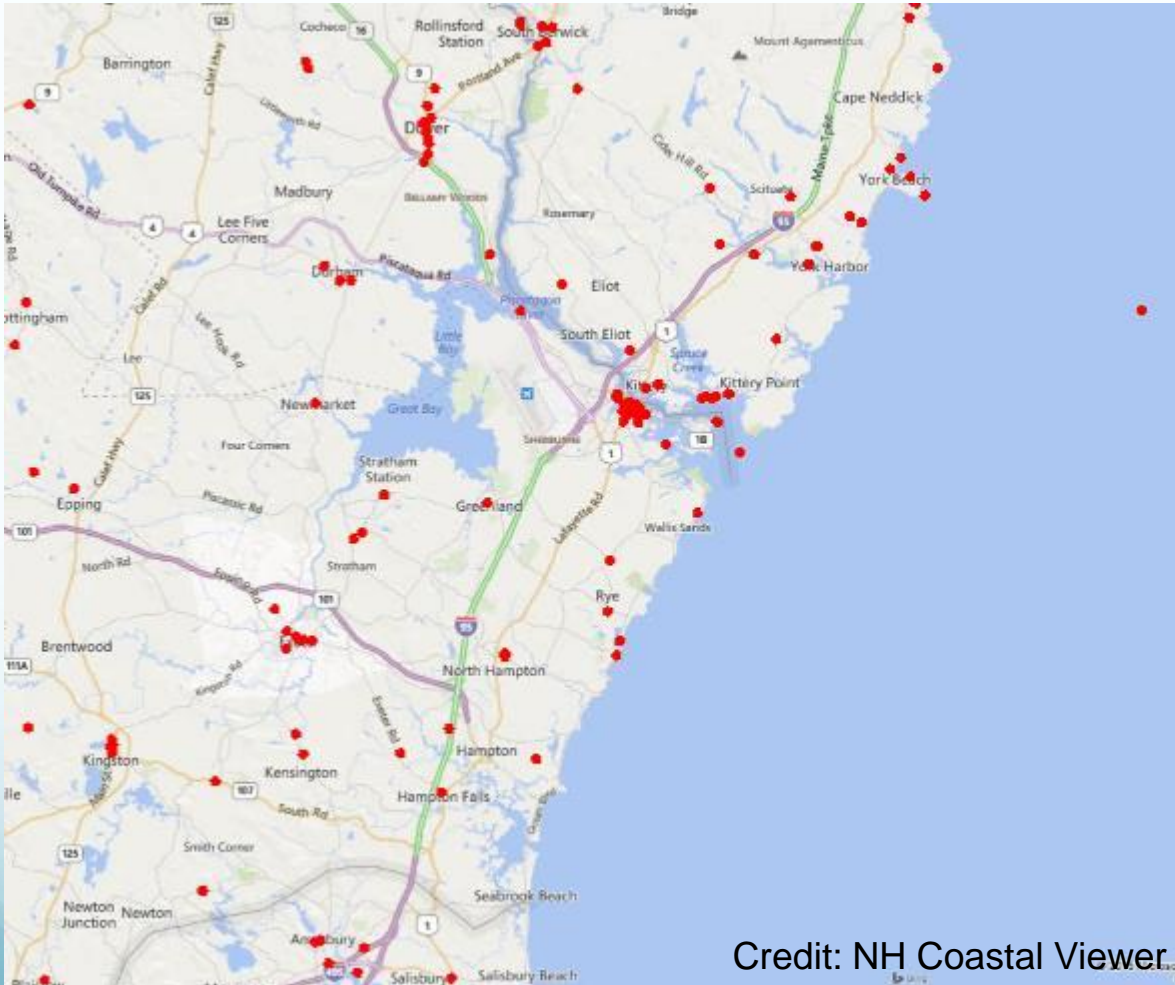


# Keeping New Hampshire's History Above Water: Protecting Seacoast Heritage from Climate Change and Coastal Hazards



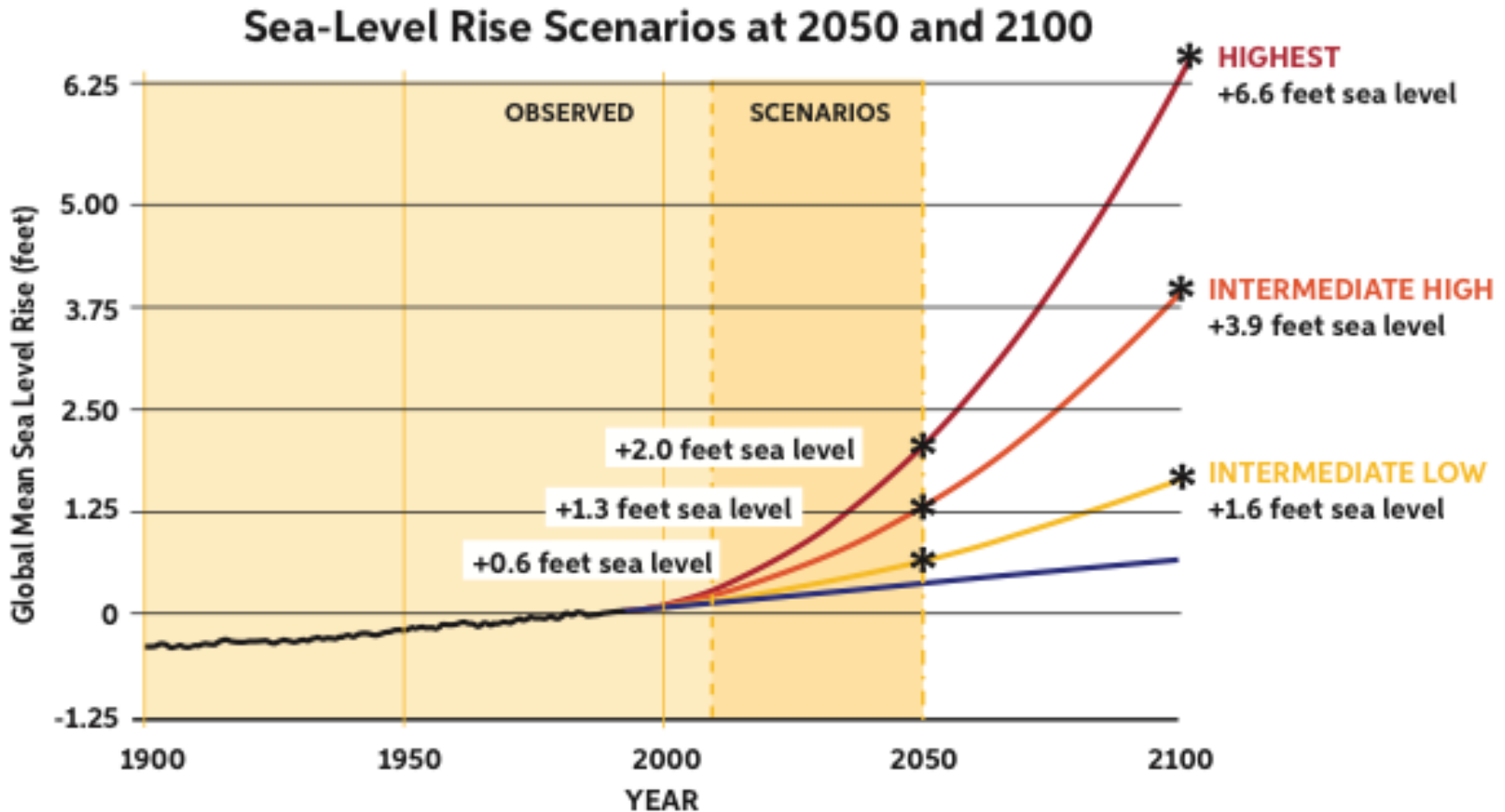
# Coastal NH and Cultural Resources



Red dots show points from the National Register of Historic Places, which is only a fraction of the historical and cultural resources in NH.

Credit: NH Coastal Viewer

# Sea Level Rise in NH

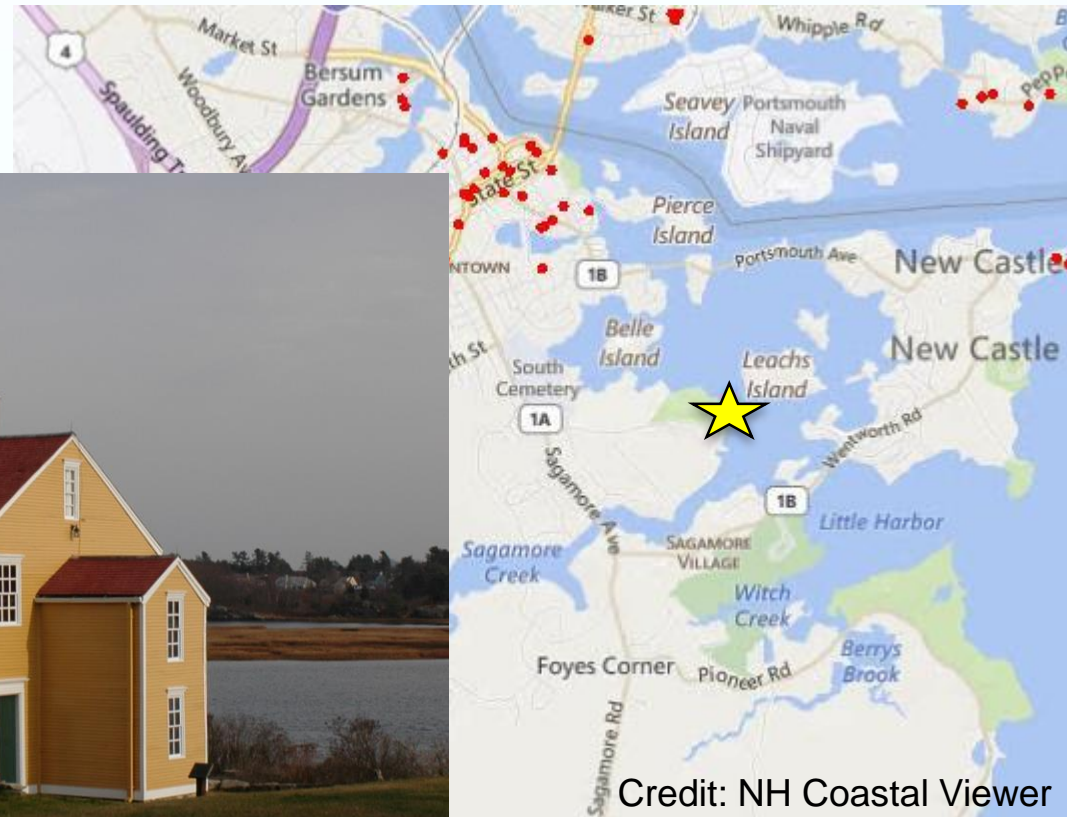


Credit: NHCRHC Science and Technical Advisory Panel



# Coastal NH and Cultural Resources

Example: How will sea level rise affect the Wentworth-Coolidge Mansion?



Credit: NH Coastal Viewer

Credit: Steve Miller

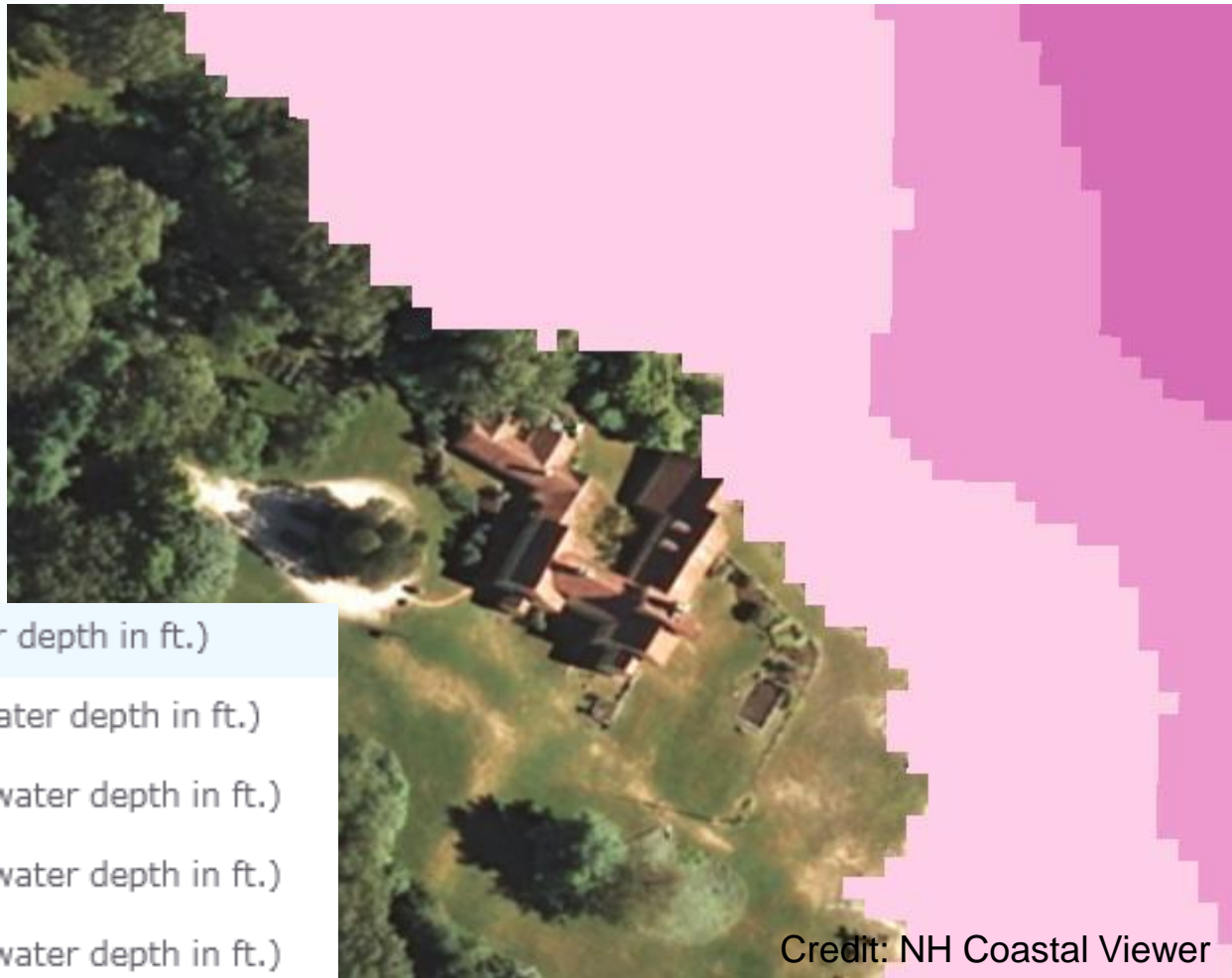
# Wentworth-Coolidge Mansion and Sea Level Rise



Credit: NH Coastal Viewer

Wentworth-Coolidge Mansion from above.  
Current conditions at low tide.

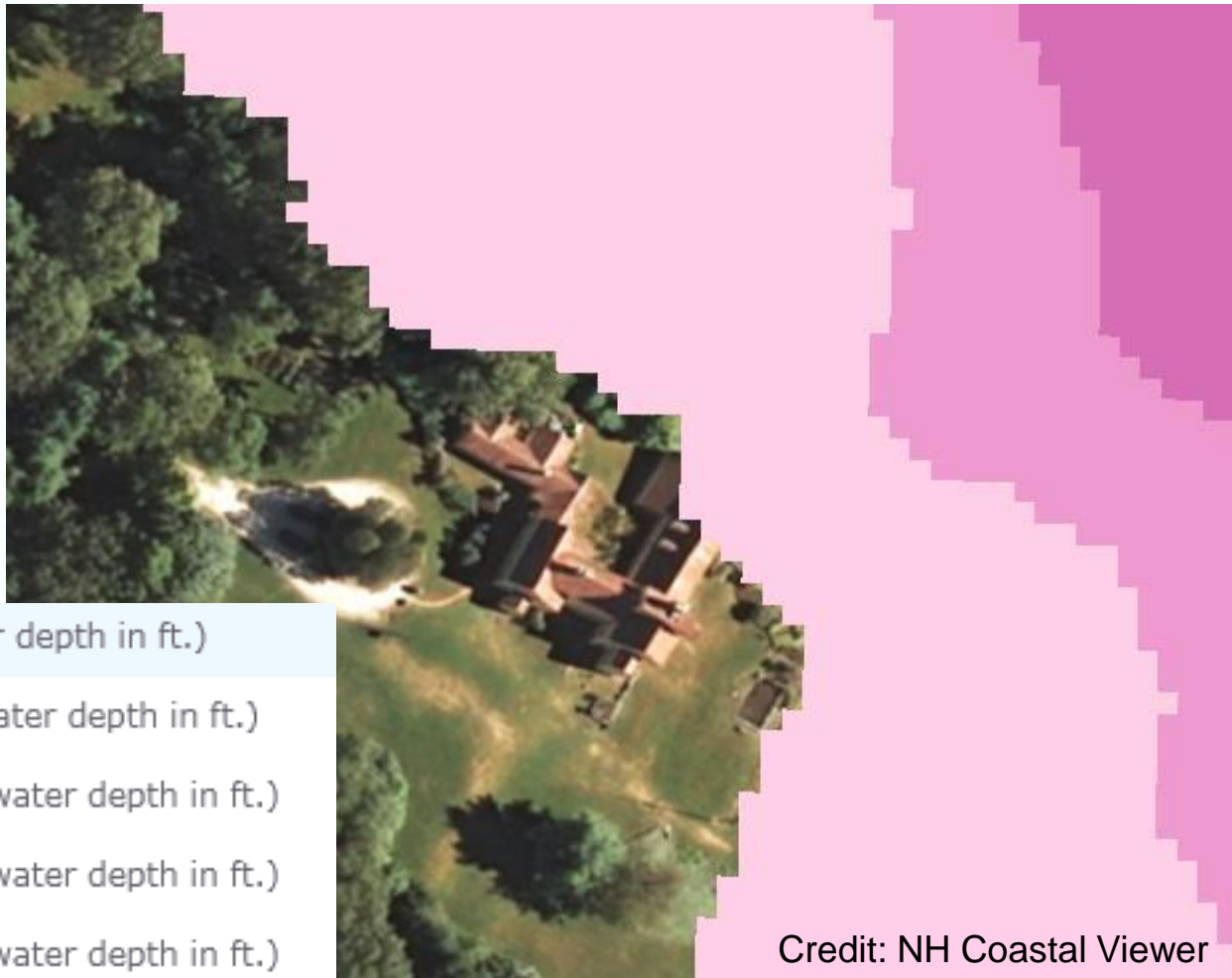
# Wentworth-Coolidge Mansion and Sea Level Rise



Regular tidal flooding with 1.7' of sea level rise.

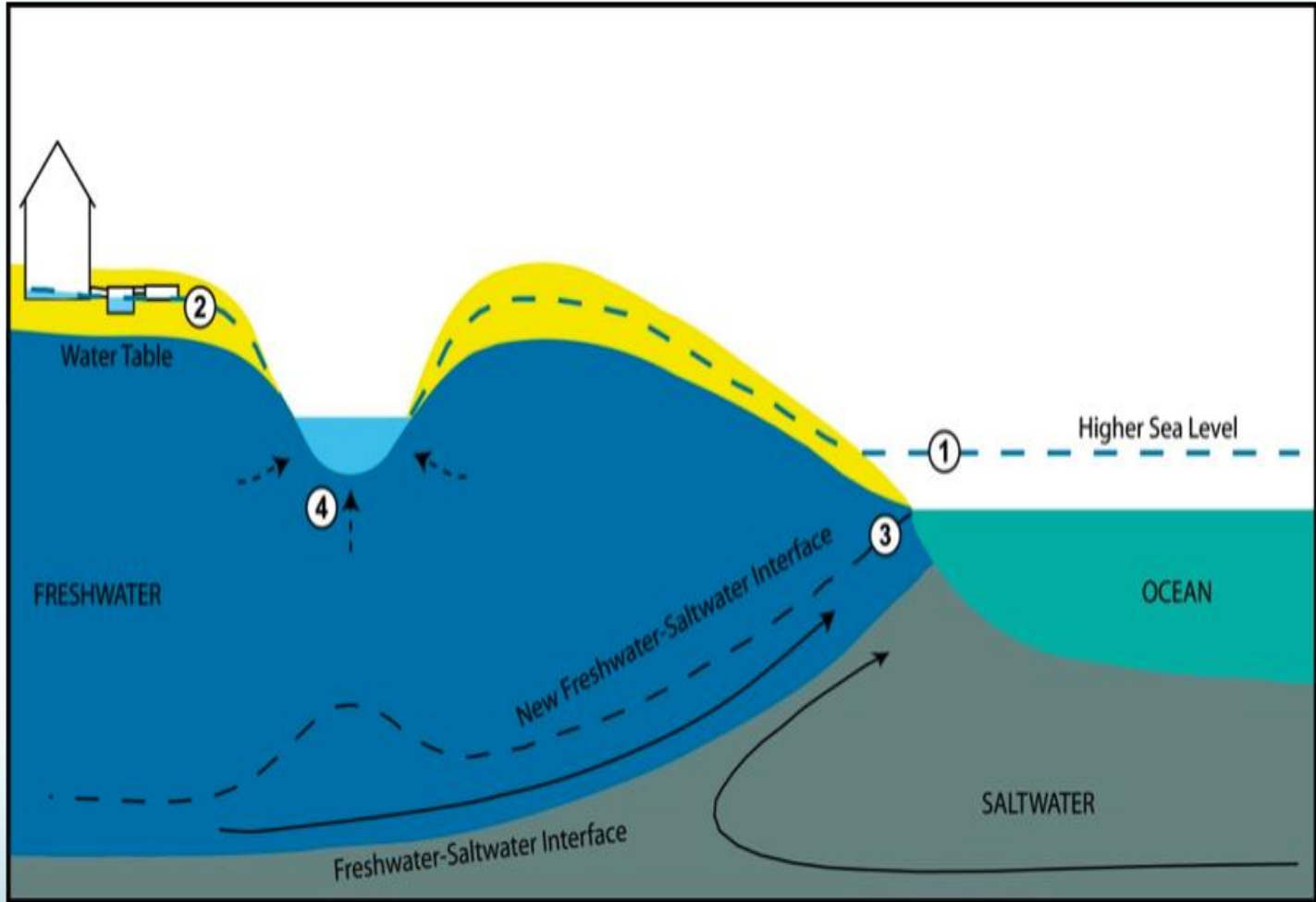


# Wentworth-Coolidge Mansion and Sea Level Rise



Regular tidal flooding with 6.3' of sea level rise.

# Sea level rise will also impact groundwater levels



(USGS URL: [wh.er.usgs.gov/slr/coastalgroundwater.html](http://wh.er.usgs.gov/slr/coastalgroundwater.html))



# Thinking About Solutions...and Tradeoffs



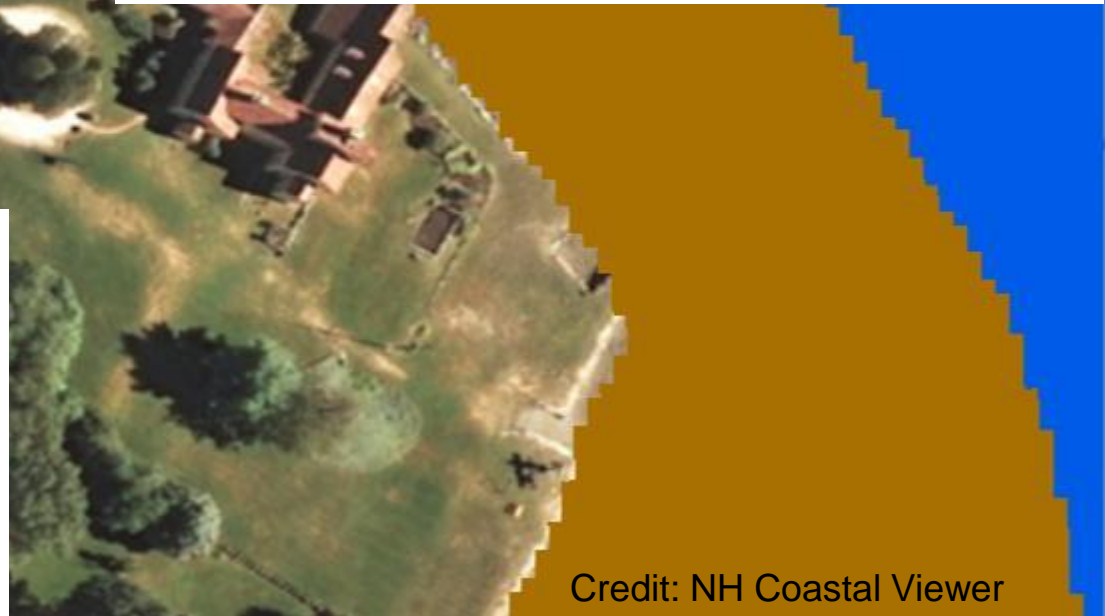
- Transitional salt marsh
- Salt marsh
- Mud flat
- Inland open water
- Tidal water

# Thinking About Solutions...and Tradeoffs



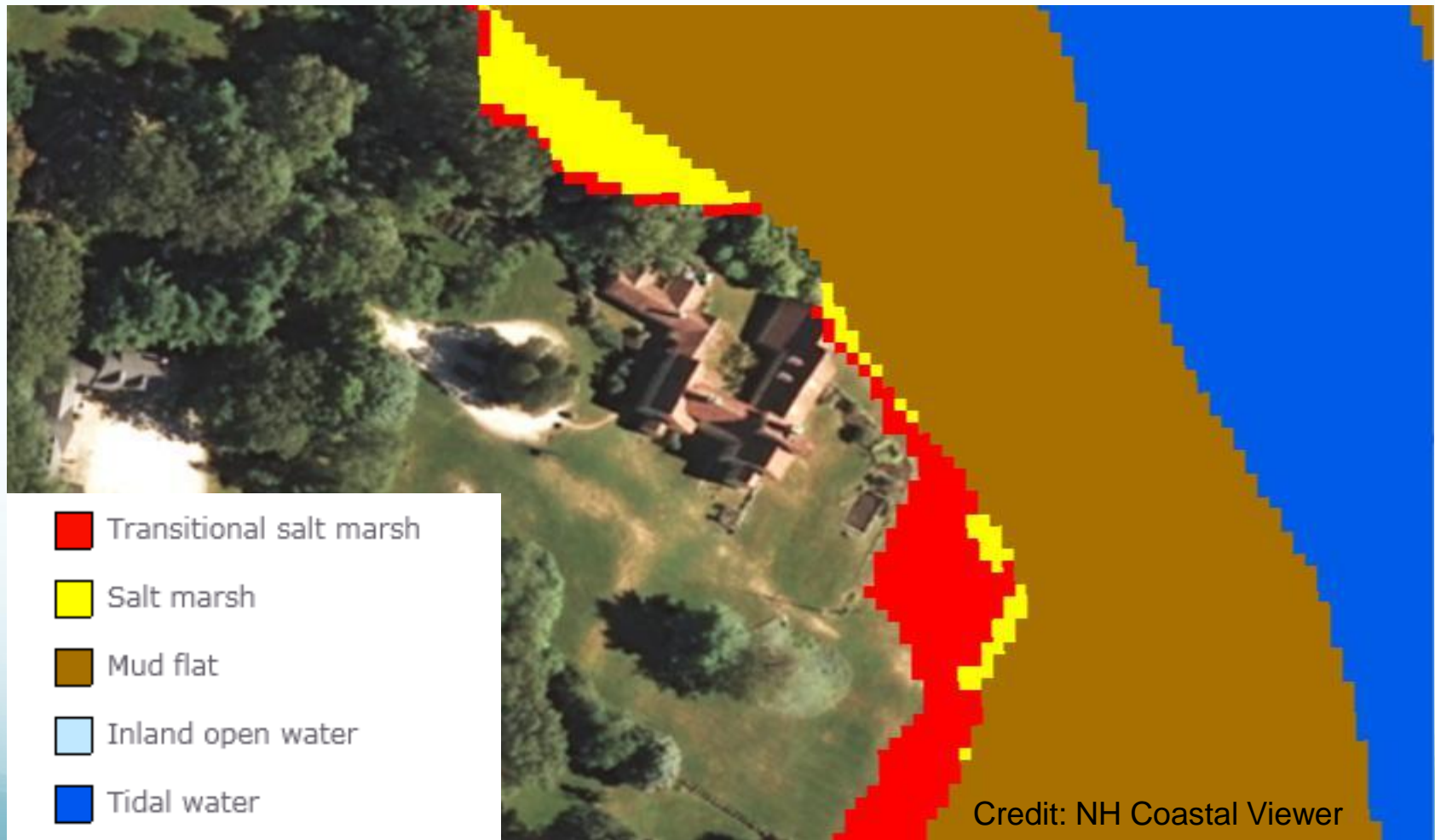
Coastal habitats will shift with sea level rise and changes in climate. The Sea Level Affecting Marshes Model (SLAMM) predicts that NH will lose up to 95% of our salt marshes by 2100. However, in some areas, we will likely gain salt marshes.

-  Transitional salt marsh
-  Salt marsh
-  Mud flat
-  Inland open water
-  Tidal water



Credit: NH Coastal Viewer

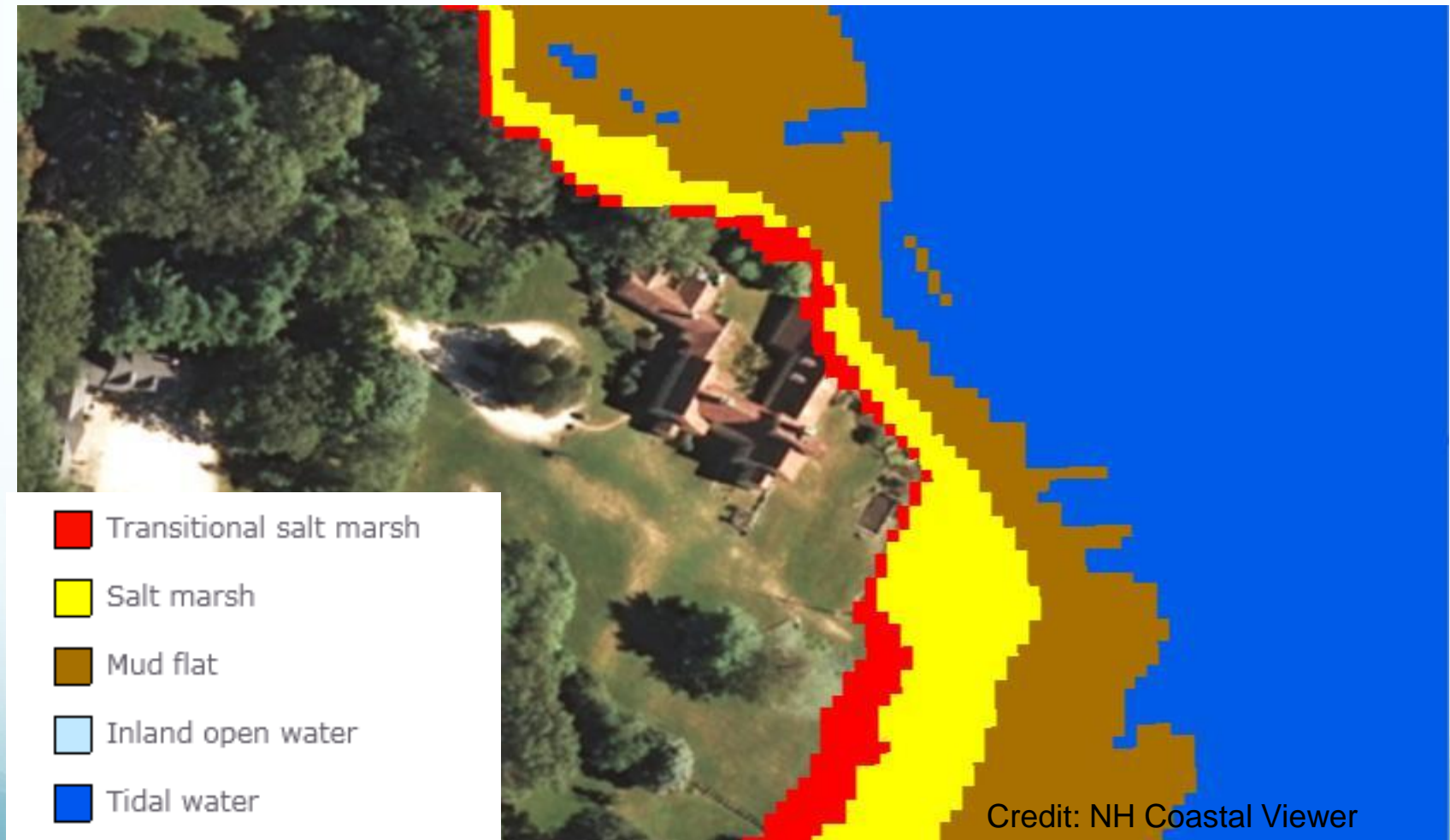
# Thinking About Solutions...and Tradeoffs



SLAMM results for 2025, based on a projected sea level rise of 4' by 2100



# Thinking About Solutions...and Tradeoffs



SLAMM results for 2100, based on a projected sea level rise of 4' by 2100



# Now for the Experts!

- For more info on past and future workshops, and shoreline management resources visit:
  - [NHCAW.org](http://NHCAW.org)
- Tonight's presenters
  - David Luchsinger  
US National Parks Service (retired)
  - Edna Feighner and Mary Kate Ryan  
NH Division of Historical Resources
- Please fill out evaluations!